



INDUSTRIAL PRODUCTS

THOUSAND-AND-ONE SOLUTIONS



**CLEANERS / LUBRICANTS / ANTI-CORROSION PRODUCTS / PAINTS
WELDING PRODUCTS / ADHESIVES / SPECIALTY PRODUCTS / ACCESSORIES**



CRC Industries is a worldwide supplier of chemical products for the industry, automotive and electro segments. The company consists of four operating groups headquartered in the United States, Belgium, the United Kingdom and Australia. CRC Industries Europe is ISO 9001 certified.

We manufacture and supply:

- Cleaners
- Lubricants
- Anti-corrosion products
- Adhesives
- Welding products
- Additives
- Paints
- Moulding products
- Other specialty products

... for the European, African and Middle East areas.

We guarantee high quality products by following strict guidelines in all facets of research, development and production. We try to meet today's most stringent environmental and safety standards. Furthermore CRC develops new products and continues to adapt existing products to meet the needs of our customers.

For detailed product information, Technical Data and Material Safety Data, please consult our website:



www.crcind.com

“SEE FOR YOURSELF THAT CRC IS THE BEST SOLUTION!”

All information is based on test results by CRC Industries. All products should be tested for suitability on a particular application prior to use. CRC Industries makes no warranties of any kind concerning these data and has no liability for any product change arising after issue of this publication.

Note: The CRC product range is country-related. It is possible that some products, listed in the catalogue, might not be available.

CLEANERS	8-19
<i>Precision</i>	10
<i>Heavy-duty</i>	11-14
<i>Water based</i>	15-18
<i>Handcleaners</i>	19
LUBRICANTS	20-37
<i>Cutting fluids</i>	22-23
<i>Oils</i>	24-26
<i>Dry lubrication</i>	27
<i>Greases</i>	28-30
<i>Pastes</i>	31
<i>Technical info</i>	32
<i>FPS Bulk oils</i>	34-37
ANTI-CORROSION PRODUCTS	38-43
<i>Temporary</i>	39
<i>Durable</i>	40-42
<i>Overview</i>	43
PAINTS	44-47
<i>Marking & Signalisation</i>	45-46
<i>Other</i>	47
WELDING PRODUCTS	48-50
<i>Spatter release</i>	49
<i>Cleaners</i>	49
<i>Non-Destructive Testing (NDT)</i>	50
ADHESIVES	51-53
<i>Locking</i>	52
<i>Sealing</i>	52
<i>Bonding</i>	53
SPECIALTY PRODUCTS	54-55
ACCESSORIES	56
DISPLAYS	57
GLOSSARY	58
INDEX	59



FPS

FOOD PROCESSING SAFE

NSF explained

NSF is an abbreviation for the National Sanitation Foundation, which was founded in 1944 as a not-for-profit, non-governmental organisation. NSF International is a global provider of public health and safety risk management solutions to companies, governments and consumers. In 1999, it launched its voluntary Nonfood Compounds Registration Program to re-introduce the previous authorisation program administered by the U.S Department of Agriculture (USDA). Product evaluation is based on formulation and label review. Products which comply with the relevant regulations and guidelines receive a registration letter and are included in the 'NSF White Book™ Listing of Proprietary Substances and Non-food Compounds'.

USDA

The USDA (United States Department of Agriculture) used to authorise the use of non-food compounds, including cleaning agents and lubricants, within the Food Industry sector. In 1999, this former authorisation program was reintroduced as a voluntary registration program by NSF International. USDA categories for lubricants: USDA H1 for incidental food contact USDA H2 for where there is no possibility of food contact.

CRC FPS (Food Processing Safe)

Depending on the application, all CRC FPS products are designed for use in the food processing areas. Restrictions might apply to products having double codes when used as a "general purpose" CI cleaner. All CRC FPS products are NSF registered.

Food contact

Only H1 lubricants can be used where incidental food contact is possible.

NSF CATEGORIES

Cleaning products

Food & packaging materials to be removed or protected. Potable water rinse. No noticeable odor and no visual residue.

- A1 General use.
General cleaning on all surfaces in all departments.
- A7 Metal cleaners & polishes for non-food contact surfaces in all departments.
Odors to be dissipated before food & packaging materials are re-exposed in the area.
- A8 Degreaser/carbon removers for food cooking or smoking equipment (hence in all departments).
Odors to be dissipated before food & packaging materials are re-exposed in the area.
Non-processing area cleaning products.
- CI Use of cleaning or sanitizing products on equipment.
Water rinse required before returning equipment to the food processing area.

Solvent cleaners

- K1 Cleaners & degreasers for use in non-processing areas.
Detergent wash + water rinse required before returning equipment to the food processing area.
- K2 Solvent for cleaning electronic instruments.
Food & packaging materials to be removed or protected.
Odors to be dissipated before food & packaging materials are re-exposed in the area.
- K3 Adhesive & glue removers for food packaging materials.
Food & packaging materials to be removed or protected.
Detergent wash + water rinse required before re-using.
Odors to be dissipated before food & packaging materials are re-exposed in the area.

Lubricants

Used on food processing equipment as :

- anti-rust film (removal of film before re-using equipment)
- release agent on gaskets or seals of tank closures
- lubricant
- H1 Lubricant with incidental food contact (in compliance with FDA 21 CFR, section 178.3570).
- H2 Lubricant with no food contact.

Specialty

- PI Miscellaneous.



COLOR CODE



Non-Food processing area - Non-food contact (application dependent)
NSF Cat.: CI, KI



Food processing area - Non-food contact
NSF Cat.: A1, A7, A8, K2, K3, H2, PI



Food processing area - Incidental food contact
NSF Cat.: H1

ENVIRONMENT

ECO FRIENDLY PRODUCTS



DEFINITION

The terms “ECO”, “GREEN”, “BIO” ...are often used referring to different kinds of products, but do not really have a clear, unmistakable meaning as long as these characteristic words do not get a legally binding definition.

In case of chemical products, proper registrations can only be provided through test analyses performed by internationally recognized testing laboratories.

CRC'S APPROACH

CRC has chosen to apply for registration of these products in accordance with OECD test guidelines (Organisation for Economic Co-operation and Development).

Particularly for our investment in sustainable innovation and our concern for our consumer's health, CRC now offers a full range of high performance products which have a low impact on our environment.

This range of products has been currently categorised into 2 levels:

LEVEL 1

High level of biodegradability in accordance with the OECD 301B standard. Products meeting this standard will be labelled holding this logo. They will also carry the term “ECO” in their titles.

Biodegradation test OECD 301B

- A high concentration of the test material is mixed with a bacterial mixture and the ultimate degradation within 28 days period is evaluated based upon the CO₂ production. A product is considered “readily biodegradable” when 60% of the theoretical amount of CO₂ is produced within the 28-day period of the test.
- A negative result does not necessarily mean that the product will not be degraded under relevant environmental conditions. It is generally accepted that products reaching between 20 and 60% biodegradability can be considered as “inherently biodegradable”.

LEVEL 2

Environmentally preferred products.

Each product will meet a certain selection of ecological criteria:

The total of general criteria and a minimum of 3 extra specific criteria (see right column).

GENERAL CRITERIA

(Exclusion Criteria)

1. Each formula will not contain:
 - Heavy metals such as mercury (Hg), lead (Pb), cadmium (Cd) etc. known for their toxicity and persistence in the environment. (ref 1)
 - Substances of Very High Concern (SVHC). (ref 2)
 - Substances with a Global Warming Potential > 150 such as HFC's. (ref 3)
 - RoHS listed substances. (ref 4)
 - Nitrites.
 - Aromatic hydrocarbons.
 - Chlorides & bromides.
 - Phosphates and Nonyl Phenols in case of cleaners.
2. Each formula will not be classified as “toxic or very toxic to aquatic organisms, may cause long-term adverse effects in the aquatic environment”.
3. Each formula will not be classified as “may cause sensitization by inhalation and skin contact”.

PRODUCT SPECIFIC CRITERIA

(Inclusion Criteria)

Each formulation will meet a minimum of three of the following criteria (product category depended).

1. Main component is water or contains at least 50% renewable materials (ref 5). In case of lubricants the amount of renewable material is at least 70%, in case of greases at least 45%. (ref 6)
2. Formula contains less than 10 % Volatile Organic Components (VOC). (ref 7)
3. Ecological packaging. (ref 8)
4. For products listed as corrosion protection, provide a Salt Spray protection of at least 250 hours. (ref 9)
5. Inherently biodegradable according to OECD 302C*. (ref 10)
6. Readily biodegradable according to OECD 301**. (ref 11)
7. Meets the criteria of the European Eco-Label (see also www.eco-label.com). (ref 12)

Ref 1. E. Lawrence, A.R.W. Jackson, J.M. Jackson (Eds.), Longman Dictionary of Environmental Science, Addison Wesley Longman, Harlow (1998). Ref 2. Annex XV, Regulation (EC) 1907/2006 concerning the Registration, Evaluation, Authorization and Restrictions on Chemicals Ref 3. Directive 2006/40/EC relating to emissions from air-conditioning systems in motor vehicles. Ref 4. Directive 2002/95/EC of the European Parliament and of the Council of 27 January 2003 on the restriction of the use of certain hazardous substances in electrical and electronic equipment. Ref 5. Commission decision 2005/360/EC establishing ecological criteria and the related assessment and verification requirements for the award of the Community eco-label to lubricants, Annex, paragraph 5. Ref 6. Commission Decision 2005/360/EC establishing ecological criteria and the related assessment and verification requirements for the award of the Community eco-label to lubricants, Annex, paragraph 5. Ref 7. Commission Decision 2005/344/EC establishing ecological criteria for the award of the Community eco-label to all-purpose cleaners and cleaners for sanitary facilities, Annex paragraph 8 - Volatile organic components with a boiling point lower than 150°C. Ref 8. ecological packaging; Directive 94/62/EC on packaging and packaging waste. Ref 9. ASTM B117. Ref 10. inherently biodegradability (modified MITI test); OECD 302C. Ref 11. readily biodegradability; OECD 301 (A-F). Ref 12. Commission decision 2005/360/EC for lubricants - Commission decision 2005/344/EC for cleaners

*/** BIODEGRADATION = the breakdown of chemical substances by living organisms. The end result of biodegradation is often the complete conversion of organic substance to CO₂ and water.

* INHERENT BIODEGRADABILITY (OECD 302): Test performed under more favourable conditions for biodegradation. Chemicals that pass an inherent biodegradability test are considered non-persistent, although the breakdown of the chemical in the environment may be slow.

** READY BIODEGRADABLE (OECD 301): Test performed in most stringent test conditions. Chemicals that are shown to pass a ready biodegradability test rapidly degrade in wastewater treatment plants and in the natural environment.



My CRC

A service offered to CRC end-users and distributors as a means to automate the task of updating Technical Data Sheets (TDS) and Material Safety Data Sheets (MSDS), reducing the burden on staff having to remember, schedule, and undertake this HSE requirement.

By using My CRC, the end-user can ensure 100% compliance, automatically when there is a change to the datasheets, whether due to legislative changes such as hazard classifications or amendments to European law. These changes do not affect the product performance or availability, but in a highly regulated industry - up to date compliance is essential to avoid prosecution. The ongoing REACH

legislation will affect all processors, distributors, and users of chemicals throughout Europe, however, many people are unaware of what this means. Using My CRC ensures that such changes will be incorporated into the MSDS and TDS, with updates sent automatically.

Offered through the CRC website (www.crcind.com) a simple registration process provides access to the complete CRC product range where selection of relevant products takes place - receive only relevant products updates.

The system remembers the selection, and will automatically generate an email notification when a significant change occurs to either the TDS or MSDS, keeping relevant management and user personnel up-to-date.

A unique service, making compliance easy!

- 24/7 availability on-line.
- Removes the potential to 'forget' to check for updates.
- Saves time & easy to use.
- Legislation changes frequently, do you always know when it has? Receive updates automatically in your mailbox.
- All information held securely.





1. Navigate to www.crcind.com.
2. Click on the My CRC logo.
3. Select the link “New User”.
4. Fill in company details.
5. The unique log-in ID and password will be emailed to you.
6. Enter the log-in ID and password on My CRC.
7. Once logged in, select the country from the drop-down list at the top of the page.
8. The complete list of CRC products will now be displayed - using the selection boxes on the right, both MSDS and TDS updates can be selected.
9. Please confirm your selection, My CRC instantly updates which boxes have been selected.
10. Once all products of interest have been selected, simply close your internet browser - the process is now finished.

If product selection needs to be modified, simply log-in to My CRC and change the update options (click on the My CRC logo to update email preferences).





CLEANERS

Precision



Dust removal



DUST FREE



DUST FREE (FPS)

Cleaning of light contaminants

Plastic safe: Average

Plastic safe: Average



CONTACT KLEEN



CONTACT KLEEN

Heavy-duty



Solvent based

Flash Point: Low
Drying: Fast

Flash point: 25°C
Drying: Medium

Flash point: >60°C
Drying: Slow

For graffiti



FAST DRY DEGREASER



INDUSTRIAL DEGREASER



LECTRA CLEAN II



GRAFFITI REMOVER

Water based

For light contaminants

For heavy contaminants

For heavy contaminants



INOX KLEEN



ECO FOAM CLEANER



ECO COMPLEX BLUE



INSULATOR CLEANER

Micro emulsion based

Vehicle grime cleaner

Citrus gel degreaser

Removes paints, inks...

H₂O based



CITRUS CLEANER & DEGREASER



TRAFFIC FILM REMOVER



MULTIPURPOSE GEL CLEANER



GRAFFITI REMOVER

Handcleaners



Liquid soap

For light contaminants

For heavy contaminants



HANDCLEANER



SUPER HANDCLEANER

Wipes

For heavy contaminants



HAND WIPES



WIPES

CLEANERS



Cleaning of light contaminants

Plastic safe: Yes

Non-Flammable
Plastic safe: Average



QD-CONTACT
CLEANER



N.F. PRECISION
CLEANER

Solvent based

Flash point: Low
Drying: Slow

For paper labels.

For heavy contaminants

Picking paste

Environmentally Preferred

For sugar contaminants



LABEL OFF



FOODKLEEN
LABEL OFF SUPER
NSF



FOODKLEEN
NSF



INOXWELD
KLEEN



ECO COLD
CLEANER



SUGER DISOLVING
FLUID
NSF

Water based

H₂O
based

Cleaning agent /
Deodoriser

De-blocking agent

Multifunctional
detergent

Powerful de-scaler



ODOR
NEUTRALISER



PIPE DE-BLOCKER



PURIFYING
CLEANER



SCALE REMOVER

Powerful cleaner
and degreaser

Highly concentrated
alkaline degreaser

High performance
antistatic cleaning agent



MULTI SURFACE
CLEANER



HEAVY DUTY
DEGREASER



MULTIPURPOSE
CLEANER &
DEGREASER



CRC DUST FREE

Removes dust and loose dirt particles with a jet of dry gas.

CRC Dust Free is a blend of liquefied gasses that removes dust and cleans with a powerful dry jet. It prevents short circuits, downtime and damage caused by microscopic dust in electronic devices, PLC's, data processing equipment, servo-mechanisms, sensors and optical instruments.



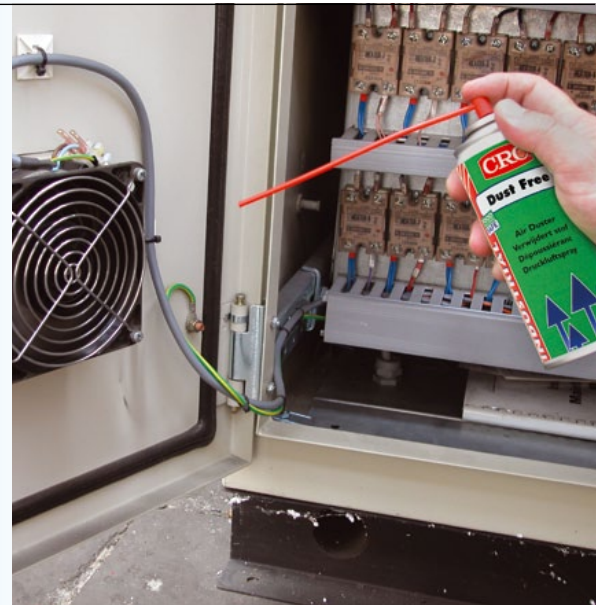
Aerosol 200 ml

Ref. 30702

CRC DUST FREE (FPS)

High pressure dust remover.

Efficient high pressure liquid gas blend that removes dust and cleans with a powerful jet of dry inert gas. It prevents errors, downtime and damage caused by microscopic dust. Leaves no residue or condensation. Designed for use as a cleaner for electrical or electronic equipment in food processing or non-processing areas.



Aerosol 400 ml

Ref. 20108



CRC CONTACT CLEANER

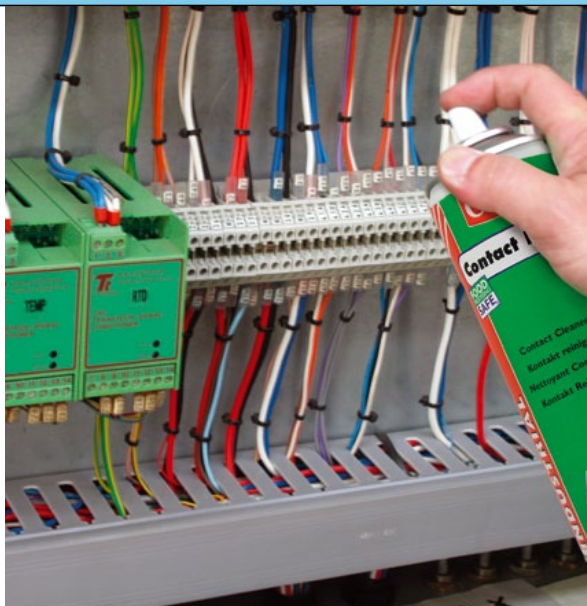
Solvent cleaner for light contaminants on electric or electronic parts. Compatible with most plastics.

CRC Contact Cleaner improves the performance and reliability of electrical/electronic equipment by cleaning contacts and components quick and effectively. CRC Contact Cleaner is a high purity, effective precision cleaning solvent. Based on a blend of fast drying solvents without chlorinated solvents. For use on plastics, test prior to use.

Aerosol 300 ml

Ref. 30469





CRC CONTACT KLEEN

Effective precision cleaner.

Residue-free contact cleaner for use on PCB's and electronic equipment. Fast drying. Not for use on energized equipment. Developed for use as a cleaner for electrical or electronic equipment in food processing or non-processing areas.

Aerosol 500 ml

Ref. 12101



CRC QD-CONTACT CLEANER

Quick drying solvent cleaner for light contaminants on electric or electronic parts. Also compatible with sensitive plastics.

Quick drying solvent blend for the cleaning of electronic equipment. It provides a suitable precision cleaning action for sensitive electronic and electrical components without risk of costly damage. CRC QD-Contact Cleaner is a stable, inert, high purity solvent cleaner, formulated for applications where lower flash point solvents may be used and where sensitive plastics are involved.

Aerosol 300 ml

Ref. 30485



CRC N.F. PRECISION CLEANER

Non-flammable solvent cleaner for light contaminants on electrical or electronic parts.

A unique non-flammable precision cleaner suitable for cleaning and degreasing all types of electrical and electronic components where a shutdown is either impossible or very expensive. CRC N.F. Precision Cleaner is free of chlorinated solvents, CFC's and HCFC's; solvent based, non-flammable, dries fast.



Aerosol 300 ml

Ref. 30490





CRC FAST DRY DEGREASER

Fast drying solvent cleaner for heavy contaminants on mechanical parts, suitable for most plastics.

A very fast drying cleaner with a low flash point, which dissolves grease, oil, lubricants and removes contaminants attached to the surface. Designed for applications where flammable solvents can be used. Test before application on sensitive plastics (e.g. EPS, XPS, ABS) or whenever stress cracking of the plastics can be a problem. When using on large surfaces, ensure adequate ventilation.

Aerosol 500 ml	Ref. 10227
Bulk 5L	Ref. 10230
Bulk 20L	Ref. 10233
Bulk 200L	Ref. 31927

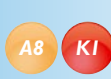


CRC INDUSTRIAL DEGREASER

Solvent cleaner for heavy contaminants on mechanical parts.

Powerful, fast evaporating cleaner with a flash point of 25°C. Removes greases, oil, lubricants, non-cured adhesives and dirt from equipment, machines and metal parts. When applying to large surfaces or in dip baths, ensure explosion prevention. Test on plastics before use.

Aerosol 500 ml	Ref. 10321
Bulk 5L	Ref. 10325
Bulk 20L	Ref. 10326
Bulk 200L	Ref. 30452



CRC LECTRA CLEAN II

Solvent cleaner with high flashpoint for heavy contaminants on mechanical parts.

Heavy-duty cleaner with a high flashpoint of over 60°C for improved application safety. The extended drying time allows the product to act during a longer period and to dissolve heavy contaminations. Suitable for use in dip baths and ultrasonic dip tanks.

Aerosol 500 ml	Ref. 30449
Bulk 5L	Ref. 10314
Bulk 20L	Ref. 10315
Bulk 200L	Ref. 30450





CRC GRAFFITI REMOVER

Removes all traces of paint and ink.

Dissolves and loosens unwanted paint and inks from aerosols, pens and markers. Safe to be used on most substrates. In case of doubt, test prior to application. Prevents damage to the original surface due to excessive scratching. Does not leave an acid or alkaline residue, which would have a baleful influence on concrete, plaster and cement.

Aerosol 400 ml

Ref. 20717



CRC LABEL OFF

Paper label remover.

For removal of self-adhesive paper labels from office equipment, cables, boxes, components, household articles, etc. CRC Label Off penetrates the label paper and dissolves the underlying adhesive. Most paper labels can be removed easily in one go after only 2 minutes without damaging the underlying surface. Test before using on plastic.



Aerosol 200 ml

Ref. 10999



CRC LABEL OFF SUPER

Label remover.

Solvent mixture, free of CFC's and HCFC's. Removes self-adhesive paper labels from most surfaces in 2-3 minutes after wetting (test on plastics prior to use). NSF listed as an adhesive and glue remover (NSF K3).

Aerosol 200 ml

Ref. 20136





CLEANERS - Heavy-Duty



CRC FOODKLEEN

Fast drying solvent cleaner, for dissolving heavy contaminants in food processing areas.

A solvent blend designed for use in the food industry; NSF A8,C1 registered. The flash point is 40°C for safe application. Dissolves grease, oil, lubricants, and non-cured adhesives.

Aerosol 500 ml	Ref. 12056
Bulk 5L	Ref. 20119



CRC INOX WELD KLEEN

Restores the original characteristics of Stainless Steel after welding.

CRC Inox Weld Kleen is a pickling paste that restores the original characteristics of stainless steel after welding or heat treatment. Degreasing, cleaning, pickling and passivating of austenitic and duplex stainless steel 303, 304, 316,..., nickel and aluminum. Fast-working, very efficient, economical and practical to use.

Bulk 2 Kg	Ref. 30379
-----------	------------



CRC ECO COLD CLEANER

Biodegradable, solvent based degreaser for mechanical parts.

Fast drying and powerful cleaner. Cleans and degreases all metal parts, machines and tools. CRC ECO Cold Cleaner penetrates quickly and removes grease, oil and dirt. Readily biodegradable: OECD 301B: 62%.

Aerosol 500 ml	Ref. 31908
Bulk 5L	Ref. 31914



CRC SUGAR DISSOLVING FLUID

dissolves fondants and sugars from a variety of surfaces in the food processing industry.

Quickly dissolves and removes sugars, fondants and derivatives. Leaves a light lubricating film that inhibits re-adhesion. Quickly penetrates and lifts sugar layer. Does not contain nut oils or nut oil derivatives. Helps prevent sugar build-up on fasteners. NSF H1 Registered No. 144180.

Bulk 5L	Ref. 30204
---------	------------





CRC INNOX KLEEN

Water based, foaming cleaner for degreasing and cleaning shiny metal surfaces.

CRC Innox Kleen is NSF A7, C1 registered for use in the food industry. It eliminates fingerprints, watermarks, dust and dirt from stainless steel. It leaves a protective non-greasy barrier for a long-term original aspect and provides metal surfaces with a long-term staining and contamination resistance. CRC Innox Kleen is also suitable for aluminum, chrome and most plastics (test prior to use).

Aerosol 500 ml Ref. 20720



CRC ECO FOAM CLEANER

Non-flammable, slow drying water based cleaner, suitable for removing heavy contaminants in vertical applications in food processing areas.

A concentrated, water based degreaser for use in the food industry; NSF A1 registered. The stable, non-dripping foam formula ensures a long contact with the contamination, especially on vertical surfaces. Rinse with water after application. Readily biodegradable according to OECD 301B: 64%.

Aerosol 500 ml Ref. 10278



CRC ECO COMPLEX BLUE

Non-flammable, slow drying water based cleaner for heavy contaminants in food processing areas.

A concentrated, water based degreaser for use in the food industry; NSF A1 registered. Excellent product for use in dip tanks, pressure washer, ultrasonic and steam cleaning equipment. Dilute according to information on the datasheet. Safe on plastics. Rinse with water after application. Readily biodegradable concentrate according to OECD 301B: 64%.

Handsprayer 750 ml	Ref. 10286
Bulk 5L	Ref. 10282
Bulk 20L	Ref. 20123
Bulk 200L	Ref. 30431



CRC INSULATOR CLEANER

Cleaner for insulators .

Water based cleaner for insulators on electrical driven trains and around power stations. Prevents leaking and creeping currents.

Brush or wipe the cream on the surface to be cleaned. Rinse with tap water. Do not use on energized equipment.

Bulk 2,5L Ref. 30201





H₂O
based

CLEANERS - Water based



CRC ODOR NEUTRALISER

Long lasting deodorant.

Water based cleaning agent and deodoriser. Contains detergents and a biocide to help combat the sources of odor. Effective against a wide range of odors.

Directions:

Apply to the surface with a cloth. Can be applied as a concentrate or diluted (up to 1:20) depending upon the level of soiling.



Bulk 5L

Ref. 20483

CRC PIPE DE-BLOCKER

Powerful de-blocking agent.

Water based, concentrated blend of caustic soda, surfactants and complexing agents. Highly alkaline, penetrates thick grease and fat residues. May be used for preventive maintenance.

Directions:

Pour the concentrate into the drain and leave to stand, preferably overnight. Rinse with warm running water.



Bulk 1L

Ref. 30030



CRC PURIFYING CLEANER

Multifunctional detergent.

A neutral pH water based cleaner with a refreshing fragrance. Contains a broad spectrum biocide.

Directions:

May be applied as a concentrate or diluted for spray application.



Bulk 5L

Ref. 20480



CRC SCALE REMOVER

Powerful de-scaler.

Cleaner for the removal of deposits of lime scale and rust. Restores and improves surface finish. Suitable for use on most metals and plastics.

Directions:

Apply as a concentrate or diluted (up to 1:20) according to the level of scale to be removed.



Bulk 5L

Ref. 20482



CLEANERS - Water based



H₂O
based



CRC CITRUS CLEANER & DEGREASER

Micro emulsion based cleaning agent.

A versatile and powerful water based degreaser. Formulated as a complex micro emulsion of citrus oils and surfactants. Ideal for quick degreasing when traditional highly alkaline products are to be avoided.

Directions:

Apply as a concentrate or diluted (up to 1:20) according to the level of soiling to be removed.



Bulk 5L

Ref. 20489

CRC TRAFFIC FILM REMOVER

Heavy-duty vehicle grime cleaner.

Water based cleaner for the removal of traffic film and general environmental soiling. Can be applied manually with a pressure washer or through automatic washing equipment. Safe for use on most plastics, painted surfaces and car bodies.

Directions:

May be used cold or hot. Apply as a concentrate or diluted (1:20 to 1:200) according to the degree of soiling. Rinse with cold water.



Bulk 5L

Ref. 20486



CRC MULTIPURPOSE GEL CLEANER

Citrus gel degreaser.

A water based degreaser based upon a blend of citrus oils, surfactants and thickening agents. Effectively removes a variety of contaminants from virtually any hard surface. Ideal for use on vertical surfaces. Safe for use on most plastics, painted or enamelled surfaces.

Directions:

Apply as a concentrate or diluted (up to 1:10) according to the level of soiling. Rinse off with water after use.



Bulk 5L

Ref. 20484



CRC GRAFFITI REMOVER

Removes traces of paints, inks and marker pens.

Versatile water based cleaner for the removal of general graffiti. Thixotropic solution for application to vertical surfaces. Ideal for use on delicate surfaces and safe for use on most substrates.

Directions:

Apply directly to the graffiti. Use of a brush may be required on porous surfaces. Leave until the graffiti has softened and rinse with water. Re-apply, if necessary. Always pre-test on plastics, coatings and varnishes before use.



Bulk 5L

Ref. 20485





CLEANERS - Water based



CRC MULTIPURPOSE CLEANER & DEGREASER

High performance antistatic cleaning agent.

Powerful water based degreaser with additional antistatic properties. Ideal for general cleaning in industry for a wide variety of applications. Safe for most plastics, metals and painted surfaces.

Directions:

Ready to use. Apply by cloth or directly to the surface to be cleaned. Rinse with cold water after application.

Bulk 5L

Ref. 20490



CRC HEAVY DUTY DEGREASER

Highly concentrated alkaline degreaser.

Highly concentrated water based detergent degreaser. Quickly removes oil, grease, silicones and heavy grime. Safe for use on most plastics, painted and enamelled surfaces.

Directions:

Can be used cold or hot. Apply as a concentrate or diluted (1: 6 to 1: 40) dependent upon the level of soiling.

Bulk 5L

Ref. 20487



CRC MULTI SURFACE CLEANER

High solvency detergent cleaner.

Powerful, water based cleaner and degreaser for multiple cleaning applications. Safe for use on most plastics, painted or enamelled surfaces. May also be used in ultrasonic cleaning equipment.

Directions:

Can be used cold or hot. May be applied by hand, brush or immersion. Apply as a concentrate or diluted (1: 6 to 1: 40) dependent upon the level of soiling.

Bulk 5L

Ref. 20488





CRC HANDCLEANER

Handcleaner for light contaminated hands.

Contains lanolin and is intended to be used without water. Mild solvents and biodegradable surfactants can remove most dirt and grime.

Tube 150 ml	Ref. 30650
Bulk 2,5L	Ref. 30651

CRC SUPER HANDCLEANER

Handcleaner for heavily contaminated hands.

Contains beside the mild solvents and biodegradable surfactants, also small friction parts from natural sources. Very effective on grease, carbon and most stubborn contaminations.

Tube 150 ml	Ref. 30675
Bulk 2,5L	Ref. 30676



CRC HAND WIPES

High absorbency cleaning wipes.

Super high absorbency hand wipes layered with an effective polymer web to give all the cleaning power of pumice without the scratching.

Bucket: 100 wipes	Ref. 12006
-------------------	------------

CRC WIPES

Multipurpose industrial strength cleaning wipes.

Removes oil, grease, paint, ink and adhesives of different surfaces. The textured side of the wipe will gently but efficiently remove all contamination. The smooth side of the wipe will effectively retain contamination.

Tub: 50 wipes	Ref. 20246
---------------	------------





LUBRICANTS

Cutting fluids

Cutting



Oils

For metal



Dry lubrication

Metal & Plastics



Food processing areas



High pressure High temperature



Greases

Multi-purpose



High loads



Adhesive



Pastes

Metal based



Ceramic based



Assembly





Threading



SUPER TAPPING FLUID II



SUPER TAPPING COMPOUND

For plastic



ECO PEN OIL



SILICONE



SILICONE (FPS)

For gears and wires



GEAR & WIRE ROPE LUBE

For chains



CHAIN LUBE

Multipurpose



MULTI OIL

Belts



BELT DRESSING

NSF

High temperature



HIGH TEMP GREASE



HT FOOD GREASE

NSF

Extreme pressure



WHITE LITHIUM GREASE + PTFE



EP FOOD GREASE

NSF



EXTREME LUBE

NSF



ASSEMBLY PASTE

NSF





CRC SUPERCUT II

Low viscous cutting liquid for normal, metal cutting operations.

Non-chlorinated, high performance cutting liquid. Reduces heat created by friction, cools by transferring heat away from cutting tools and removes shavings out of the cutting area. Increases the tool life considerably and protects freshly machined parts from rusting.



Aerosol 300 ml	Ref. 20448
Bulk 1L	Ref. 30353
Bulk 5L	Ref. 20457
Bulk 20L	Ref. 30354



CRC ECO SUPERCUT

Biodegradable cutting oil.

Natural straight oil, free of chlorine, for cutting operations in ferro, non-ferro and aluminium. Cools by transferring heat away from cutting tools, reduces heat created by friction and removes shavings out of the cutting area. Protects freshly machined parts from rusting and increases the tool life considerably. Readily biodegradable according to OECD 301B: 87%.



Aerosol 500 ml	Ref. 31911
Bulk 5L	Ref. 31917





CRC SUPER TAPPING FLUID II

High viscous cutting liquid for extreme metal cutting operations.
 Non-chlorinated, high performance tapping fluid. Designed for high-pressure applications. Reduces heat created by friction, cools by transferring heat away from cutting tools and removes shavings out of the cutting area. Increases the tool life considerably and protects freshly machined parts from rusting.

Aerosol 300 ml	Ref. 30397
Bulk 1L	Ref. 30398
Bulk 5L	Ref. 20552



CRC SUPER TAPPING COMPOUND

Specialist metal cutting compound.

CRC Super Tapping Compound is an instant, ready-to-use metal machining compound with excellent high cling and extreme pressure resistance properties. It provides an extreme-pressure resistant, tenacious film between the tool cutting edge and the work piece, ensuring an excellent surface finish and an extended tool life.



Bulk 500 g	Ref. 30706
------------	------------



CRC LUB 21

Semi-synthetic cutting fluid for cutting and rectification operations on all kinds of metals (steel, copper, aluminum, stainless steel, etc.).

This cutting fluid provides a significant extension of the life time of cutting tools and gives a superb anti-corrosion coating to the machined parts. The cuttings are evacuated more easily. Compared to traditional fluids, CRC LUB 21 has a considerable extended life time.

Bulk 5L	Ref. 20248
Bulk 25L	Ref. 30405
Bulk 200L	Ref. 30404





CRC 3-36

Light lubricating oil, good penetration for general use.

A universal lubricating oil with excellent penetrating properties. Suitable as multipurpose lubricant for simple applications. Gives also a good corrosion protection for indoor stored parts.

Aerosol 300 ml	Ref. 10106
Aerosol 500 ml	Ref. 10110
Bulk 5L	Ref. 10114
Bulk 20L	Ref. 30362
Bulk 200L	Ref. 30364



CRC 5-56 + PTFE

Multifunctional service fluid for use in the professional mechanical maintenance.

Contains PTFE for an extended lubrication function under industrial conditions. Performs extremely well when frequent start, stop or alternating movements occur. Displaces moisture and prevents electrical failure. Provides a good protection against corrosion. Ultimate penetration capacity for de-blocking threaded connections or clamped metal surfaces. Cleans and protects surfaces contaminated by machining or handling.

Aerosol 400 ml Ref. 30337

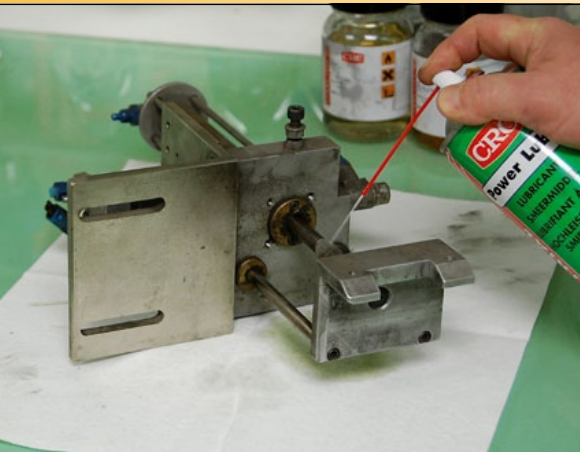


CRC POWER LUBE

Light lubrication oil with PTFE, for frequent start-up situations.

Superior lubricant for universal use, containing PTFE. Provides a long-lasting protection against wear, friction and corrosion.

Aerosol 400 ml Ref. 30517



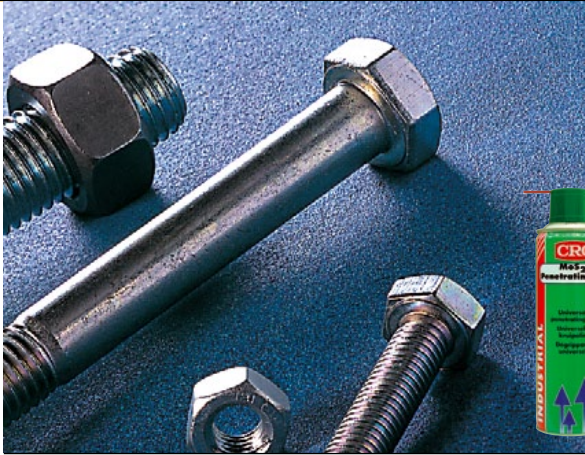
CRC ROST FLASH

Rust loosener with freeze shock effect.

When sprayed onto a rusted nut bolt connection, the rust cools down (-40°C) and cracks, leaving small fissures. The active liquid will rapidly penetrate into those small openings and blocked parts are separated easily. CRC Rost Flash loosens all kinds of threaded parts, hinges and sliding parts. Free of silicones and acids.

Aerosol 500 ml Ref. 10864





CRC PENETRATING OIL + MoS₂

A penetrating oil that quickly frees and lubricates seized mechanisms. Quickly penetrates through corrosion and soil. Frees seized and rusted bolts, nuts and other metal components. Leaves a lubricating MoS₂ film.



Aerosol 300 ml Ref. 30297



Also available

CRC PEN OIL			
Aerosol 400 ml			Ref. 20117

CRC ECO PEN OIL

A biodegradable penetrating oil.

Lubricates and frees seized and rusted metal parts (bolts, screws,...). Facilitates dismantling. Penetrates easily through corrosion and soil. Readily biodegradable according OECD 301B: 89%.



Aerosol 500 ml Ref. 31909
Bulk 5L Ref. 31915



CRC SILICONE

Synthetic lubricating oil, suitable for plastic drives and applications at high temperatures.

Superior synthetic lubricant with a premium grade high quality silicone. CRC Industrial Silicone exhibits superior lubrication and temperature/viscosity characteristics. Reduces friction and noise on non-metal parts.

Aerosol 400 ml Ref. 10526
Bulk 5L Ref. 30053



CRC SILICONE (FPS)

Food Processing Safe, synthetic lubricating oil, suitable for plastic drives and applications at high temperatures.

Superior synthetic lubricant with a premium grade high quality silicone. CRC Silicone exhibits superior lubrication and temperature/viscosity characteristics. NSF H1 registered. It reduces friction and noise on non-metal parts, throughout the food industry.

Aerosol 400 ml Ref. 11097





CRC GEAR & WIRE ROPE LUBE

Heavy-duty Lubricant.

CRC Gear and Wire Rope Lube is formulated to provide protection and lubrication under all operating conditions. The product penetrates deeply for internal protection of open gears, wire ropes, racks and pinions, crown wheels and cams, driving mechanisms in the construction, shipyard, docks and marine, quarrying, heavy engineering, automotive and manufacturing industries.

Aerosol 400 ml

Ref. 10102

CRC CHAIN LUBE

Food Processing Safe, heavy lubricating oil for driving and transport chains.

High performance, foaming lubricant, containing PTFE. CRC Chain Lube is compatible with o-rings, highly resistant to splash water and prevents corrosion to occur. The properties and the NSF H1 registration make the product an excellent lubricant for chains in the food industry.



Aerosol 400 ml

Ref. 10267

Bulk 5L

Ref. 30033



CRC MULTI OIL

Food Processing Safe, light multipurpose oil for general use.

Extremely efficient and effective general-purpose lubricant, for use in the food industry. CRC Multi Oil is NSF H1 registered, exhibits an excellent penetrating ability and loosens rust, scale, dirt and corrosion.



Aerosol 400 ml

Ref. 10258

Bulk 5L

Ref. 20157



LUBRICANTS - Dry



CRC DRY LUBE

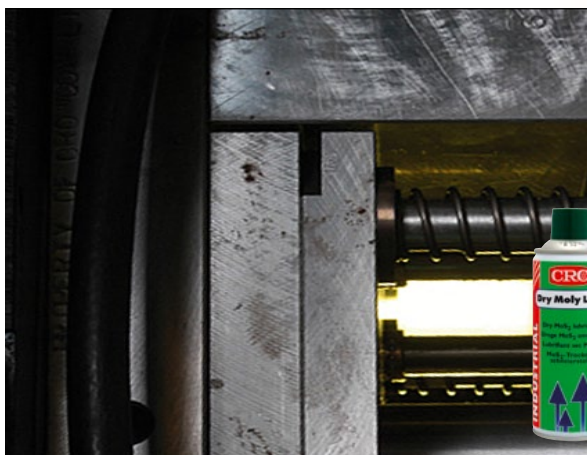
PTFE lubricant for dry lubrication and use on plastic friction points.
 CRC Dry Lube is a fast drying dispersion of white, waxy PTFE particles, leaving a dry lubricating film on the surface. The product exhibits outstanding anti-stick and release properties. As a lubricant, it is most effective at reduced speeds and low loads.

Aerosol 400 ml Ref. 30519

CRC DRY LUBE-F

PTFE lubricant for dry lubrication and use in food processing areas.
 Grease- and oil-free lubricant for the lubrication of plastic, rubber or metal surfaces. Clean, dry and not sticky. Temperature resistance up to 250°C. As a lubricant, CRC Dry Lube-F is most effective where low speeds and light loads are involved. Recommended for use as a lubricant in food processing areas where incidental food contact may occur.

Aerosol 400 ml Ref. 20343



CRC DRY MOLY LUBE

High pressure resistant, dry MoS₂ film for metal-to-metal lubrication where a wet film cannot be tolerated.
 High temperature resistance. Reduces stick and slip problems. Displaces and seals out water and moisture. General corrosion protection. Prevents seizing and fretting. Produces a very low coefficient of friction.

Aerosol 400 ml Ref. 20668

CRC BELT DRESSING

Adhesive belt lubricant.
 Stops slipping. Water resistant. Aids transmission efficiency and gives extra pulling power. Stops slipping and squeaking. Designed for use as a lubricant in food processing areas where incidental food contact may occur.

Aerosol 400 ml Ref. 20137





CRC MULTI GREASE

Lithium EP grease for general purpose.
For use on all common rotative bearings.

Tube 100 ml	Ref. 30566
Cartridge 400 g	Ref. 30567
Bulk 1 kg	Ref. 30568
Bulk 5 kg	Ref. 30569

CRC ECO MULTI GREASE

Biodegradable multipurpose EP grease.

Multifunctional EP grease with high water resistance. Can be used on all common rotative bearings. Biodegradability according to OECD 301B: 82% (cartridge). Biodegradability according to OECD 301B: 27% (aerosol).

Aerosol 500 ml	Ref. 31912
Cartridge 400 g	Ref. 31918



CRC FOOD GREASE

Multipurpose grease for food processing equipment.

Long-term lubrication on food processing equipment where incidental food contact may occur. CRC Food Grease is NSF H1 registered for use in the food industry and can be applied on all metal constructions used in the food industry: hinges, valves, chains, gears, joints,

Aerosol 400 ml	Ref. 20210
Cartridge 400 g	Ref. 20158
Bulk 1 kg	Ref. 10291
Bulk 20 kg	Ref. 30438



CRC SUPER LT GREASE + MoS₂

Lithium EP grease with MoS₂ for low speed, high load applications.

This grease retains its lubricating properties under high surface pressure and impact loads.

Tube 100 ml	Ref. 30565
Cartridge 400 g	Ref. 30576
Bulk 1 kg	Ref. 30578
Bulk 5 kg	Ref. 30580





CRC SUPER ADHESIVE GREASE

Lithium EP grease for low speed, high load applications with occasional exposure to splash water.

When vibrations, oscillating movements and impact loads occur under outdoor conditions. The good sticking property allows vertical or overhead applications.

Tube 100 ml	Ref. 30585
Cartridge 400 g	Ref. 30587
Bulk 1 kg	Ref. 30589

CRC HIGH TEMPERATURE GREASE

Lithium EP grease for low speed, high load applications with exposure to high temperatures. Recommended on bearings of electric motors.

Tube 100 ml	Ref. 30570
Cartridge 400 g	Ref. 30572
Bulk 1 kg	Ref. 30573
Bulk 5 kg	Ref. 30574



CRC HITEMP FOOD GREASE

High temperature bearing grease for food processing equipment.

-20°C to +220°C. Provides long-term high temperature. NLGI classification 2. Protects against corrosion in wet environments. Contains PTFE to improve anti-wear performance. Extends lubrication intervals and working life of components. Advised for use as a lubricant in food processing areas where incidental food contact may occur.

Cartridge 400 g	Ref. 20122
-----------------	------------





CRC WHITE LITHIUM GREASE + PTFE

Lithium complex grease with PTFE for low speed and high load applications. A high purity NLGI 2 white, lithium based grease with an advanced additive package including PTFE for superior lubrication. CRC White Lithium Grease has a smooth consistency for optimum surface coverage.

Aerosol 400 ml

Ref. 10477

CRC EP FOOD GREASE

Bearing grease with PTFE for food processing equipment.

-50°C to +165°C. Provides long-term lubrication with extreme pressure resistance. NLGI classification 2. Protects against corrosion in wet or saturated environments. Excellent extreme pressure performance. Extends lubrication intervals and working life of components. NSF listed for use as a lubricant in food processing areas where incidental food contact may occur.



Cartridge 400 g

Ref. 20121



CRC EXTREME LUBE

High pressure lubricant.

Synthetic NLGI 2 grease, highly charged with extreme pressure additives. Highly stable with long service life. Excellent water resistance. Functional over a wide temperature range: -40 °C to 180 °C. Provides long-lasting lubrication. Safe on most rubbers, plastics and coatings. Contains corrosion inhibitor. Very good oxidation stability. Acts like an oil, sets like a grease.

Aerosol 400 ml

Ref. 30087

Cartridge 400 g

Ref. 30088





CRC COPPER PASTE

Paste with copper particles for heavy loads at start-up situations. Also acts as anti-seize.

Contains micronized copper powder, anti-oxidant and anti-wear additives. Prevents metal-to-metal contact, seizing, galling and fretting corrosion, especially on sliding bearings.

Aerosol 300 ml	Ref. 10693
Tube 100 ml	Ref. 10690
Bulk 500 gr	Ref. 10699



CRC METAL FREE PASTE

Ceramic paste for heavy loads and high temperatures during start-up conditions. Also acts as anti-seize.

A ceramic separating and mounting paste for applications from -40°C to +1.400°C. Preventing metal-to-metal contact as cause for seizing, galling and fretting corrosion, during heavy start-up conditions or high temperature application.

Aerosol 300 ml	Ref. 10723
Tube 100 gr	Ref. 10720
Bulk 1 kg	Ref. 20706



CRC GRAPHITE ASSEMBLY PASTE + MoS₂

Assembly paste with solid graphite particles and MoS₂ for easy assembly and smooth start-up situations.

Has a good affinity to metals and resists high pressure and elevated temperatures.

Aerosol 400 ml	Ref. 10712
----------------	------------

CRC ASSEMBLY PASTE

Assembly paste and anti-seize compound.





For lubrication of bushes, sliding surfaces and small open gears. Prevents damage at start-up and protects during running-in. Protects against seizing of threaded components. Effective from -30°C to +150°C as a lubricant and to +1100°C as an antiseize. Developed for use as a lubricant in food processing areas where incidental food contact may occur.

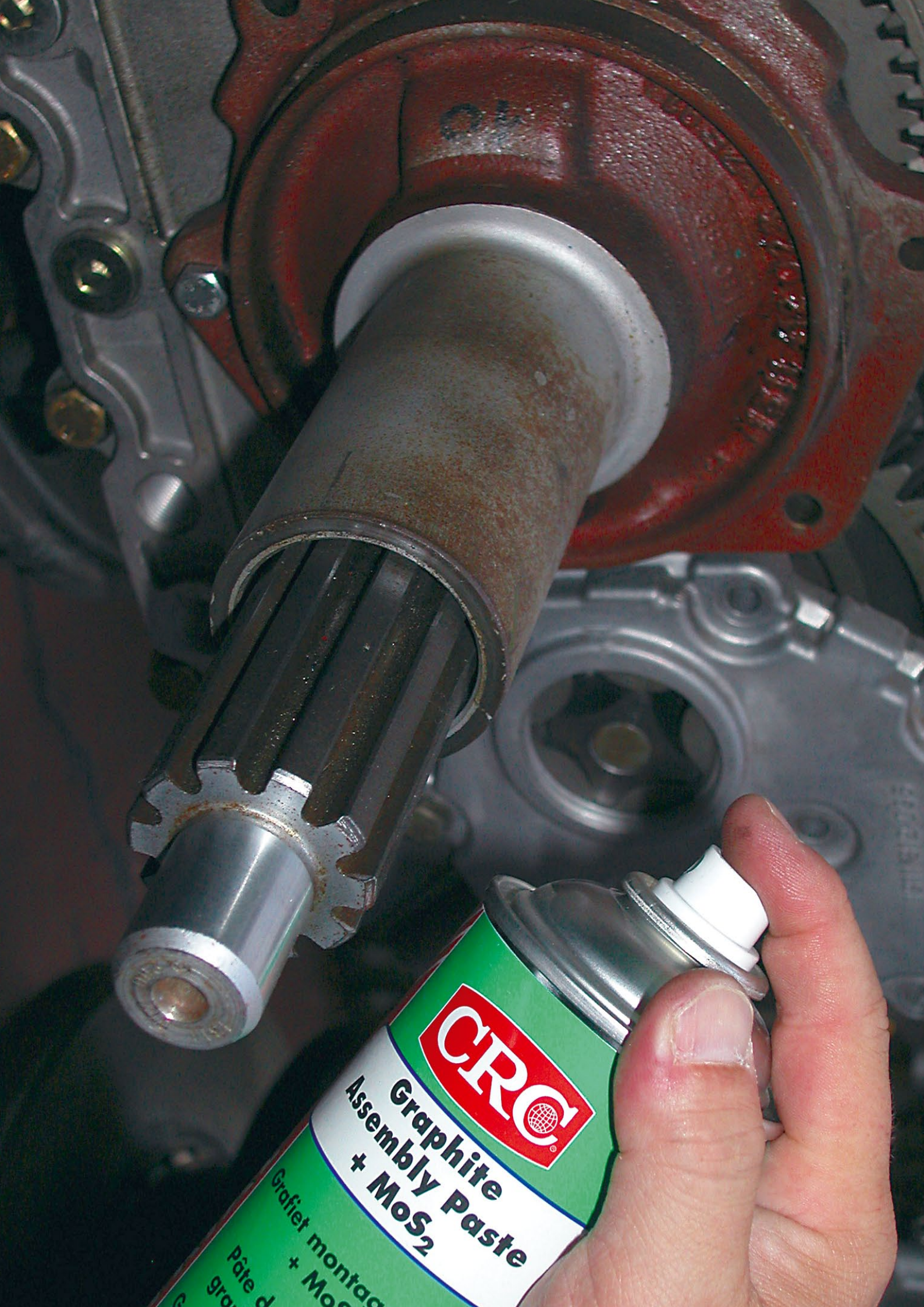
Aerosol 400 ml	Ref. 20109
Tin 500 g	Ref. 20120



LUBRICANTS - Technical info



Product	Min. temp. (°C)	Max. temp. (°C)	DN (mm/min)	DIN 51 825
CRC Multi Grease	-30	130	400.000	KP 2 K-30
CRC ECO Multi Grease 	-40	140	-	-
CRC Super LT Grease + MoS ₂	-30	130	280.000	KPF 2 K-30
CRC Super Adhesive Grease	-30	140	250.000	KP 2 N-30
CRC High Temperature Grease	-30	150	400.000	KP 2 P-30
CRC Food Grease 	-20	140	500.000	K 2 K-20
CRC EP Food Grease 	-50	165	400.000	KP 2 P-50
CRC HiTemp Food Grease 	-20	220	200.000	K 2 U-20
CRC Graphite Assembly Paste + MoS ₂	-30	650	-	-



CRC

**Graphite
Assembly Paste
+ MoS₂**

Grafiel montag
Pâte d
gra



GENERAL INFO

Oil properties which determine the oil's field of usage:

- **Viscosity**
A measure of a fluid's resistance to flow.
- **Viscosity index (VI)**
Relationship of viscosity in function of temperature.
- **Pour point (PP)**
The lowest temperature at which a fluid still can be pumped.
- **Film strength**
The measurement of a lubricant's ability to keep an unbroken film during operation (load) conditions.

Mineral oils & PAO oils (Poly-Alpha-Olefin)

	<i>Mineral Oil</i> (CRC FPS Lub Oil)	<i>PAO Oil</i> (CRC FPS Lub Oil PAO)
Viscosity Index (VI)	+	++
Aging	+	++
Pour point (PP)	-	+++
Wear protection	+	++





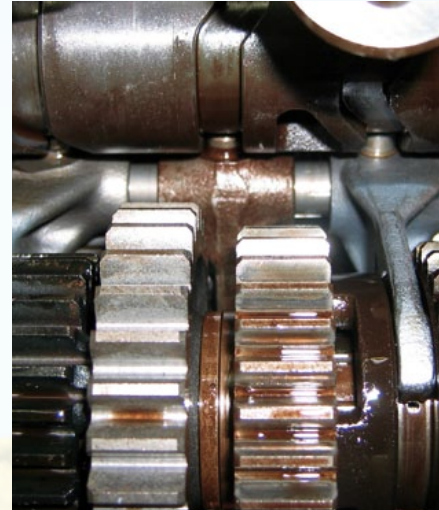
GEARBOX OILS

Definition of transmission / gearbox

A transmission or gearbox provides speed and torque conversions from a rotating power source to another device using gear ratios.

Demands on gearbox oils:

- Thermal and oxidative stability.
- Compatibility with sealing materials.
- Protection against excessive gear and bearing wear.
- High-temperature and extreme pressure protection (EP gear oils).
- Gear and bearing cleanliness.
- Emulsibility characteristics.
- Rust and corrosion protection, especially to yellow metal components.
- Antifoaming characteristics.



Choosing a gearbox oil

Synthetic lubricants are conventionally reserved for equipment subjected to:

- Extreme high or low temperatures.
- Frequent high loading.
- Extended service intervals.

→ **GEARBOX OILS BASED ON PAO.**

CRC LUB OIL PAO 150 (ISO VG 150) * → VI = 137 / PP = -56 °C

CRC LUB OIL PAO 220 (ISO VG 220) * → VI = 140 / PP = -51 °C

CRC LUB OIL PAO 320 (ISO VG 320) * → VI = 142 / PP = -48 °C

Advantages:

- NSF H1: General lubricant / Incidental food contact.
- EP additives.
- Antifoaming characteristics.
- Antioxidant.
- Good anti-corrosion properties.
- Safe on most rubbers.

Lub oil PAO 150 Bulk 5L	Ref. 20639
Lub oil PAO 150 Bulk 20L	Ref. 20638
Lub oil PAO 220 Bulk 5L	Ref. 20641
Lub oil PAO 220 Bulk 20L	Ref. 20640
Lub oil PAO 320 Bulk 5L	Ref. 20645
Lub oil PAO 320 Bulk 20L	Ref. 20644



* Consult the equipment manual / specifications to select the correct lubricant viscosity grade (ISO VG).





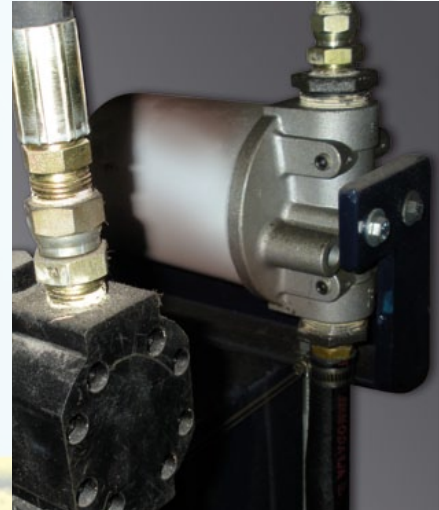
HYDRAULIC OILS

Definition of hydraulic oil

Hydraulic oil (fluid / liquid) is a medium by which power is transferred in hydraulic machinery.

Demands on hydraulic oils:

- Adequate viscosity (pump & sealing).
- High viscosity index (VI).
- No compressibility.
- Fast air release.
- Low foaming.
- Good thermal capacity.
- Low temperature fluidity.
- Corrosion control.



Choosing a hydraulic oil

Modern hydraulics use smaller pumps and higher actuator speeds, resulting in:

- High flow rates and higher temperatures.
 - Higher temperature = faster oxidation.
 - Short retention time.
 - Asks for fast water and air separation.
- DIN 51524/T2 FOR HYDRAULIC FLUID

CRC LUB OIL PAO 32 (ISO VG 32) * → VI = 142 / PP = -57 °C

CRC LUB OIL PAO 46 (ISO VG 46) * → VI = 145 / PP = -57 °C

CRC LUB OIL PAO 68 (ISO VG 68) * → VI = 141 / PP = -57 °C

Advantages:

- NSF H1: General lubricant / Incidental food contact.
- Superior antifoam capacity.
- Good deaeration .
- Excellent water demulsifying properties.
- Contains corrosion inhibitor.
- Provides long lasting lubrication.
- Low pour point (-57 °C).

Lub oil PAO 32 Bulk 5L	Ref. 20643
Lub oil PAO 32 Bulk 20L	Ref. 20642
Lub oil PAO 46 Bulk 5L	Ref. 20647
Lub oil PAO 46 Bulk 20L	Ref. 20646
Lub oil PAO 68 Bulk 5L	Ref. 20649
Lub oil PAO 68 Bulk 20L	Ref. 20648



* Consult the equipment manual / specifications to select the correct lubricant viscosity grade (ISO VG).



LUBRICATION OILS

Demands on lubricating oils:

- Transfer heat.
- Protect against wear.
- Protect against corrosion.
- Keep engines clean.
- Sealing properties.

When to use mineral oils for machine lubrication?

- Indoor machine operation.
- Focus on general lubrication and protection.
- No extreme temperature fluctuations.
- No extreme low temperatures (below -21 °C).

CRC LUB OIL 32 (ISO VG 32) * → VI = 105 / PP = -21 °C

CRC LUB OIL 46 (ISO VG 46) * → VI = 105 / PP = -21 °C

Advantages:

- NSF H1: General lubricant / Incidental food contact.
- Superior antifoam properties.
- Good deaeration.
- Contains corrosion inhibitor.
- Excellent water demulsifying characteristics.



Lub oil 32 Bulk 5L	Ref. 20635
Lub oil 32 Bulk 20L	Ref. 20634
Lub oil 46 Bulk 5L	Ref. 20637
Lub oil 32 Bulk 20L	Ref. 20636

* Consult the equipment manual / specifications to select the correct lubricant viscosity grade (ISO VG).





Temporary protection

Indoor Storage

Up to 6 months

Up to 2 years



Outdoor storage

Up to 1 year
Covered conditions

Up to 2 years



Durable protection

Cathodic protection



Coatings

Primer

Aluminum aspect

Exceptional gloss



Inox aspect

High temperatures

Electronic parts



Rust treatment

Converter

Remover

Remover





CRC 3-36

Short-term corrosion inhibitor. Indoor protection up to 6 months.
 Multipurpose corrosion inhibitor with water repellent and lubricating properties. Forms a thin, almost invisible and long-lasting protective film against water and oxygen. Exceptional penetrating properties, allowing the product to work even into the smallest pores and cracks. CRC 3-36 protects metal parts from corrosion when stored indoors, during a shorter period.

Aerosol 300 ml	Ref. 10106
Aerosol 500 ml	Ref. 10110
Bulk 5L	Ref. 10114
Bulk 20L	Ref. 30362
Bulk 200L	Ref. 30364



CRC SP 350 II

Long-term corrosion inhibitor. Indoor protection up to 2 years. Outdoor protection when covered, up to 1 year.

Highly viscous protective oil. Forms a thin penetrating protective film, which does not dry. Protects against moisture and corrosive vapors. Displaces moisture and does not drip off. Covers both smooth surfaces and sharp edges. Provides a relatively long corrosion protection. Do not store the protected parts in outdoor and uncovered conditions.

Aerosol 300 ml	Ref. 30406
Bulk 5L	Ref. 20294
Bulk 20L	Ref. 30407



CRC SP 400 II

Long-term outdoor, corrosion inhibitor. Outdoor protection up to 2 years.
 Waxy corrosion protector. Provides an effective corrosion protection in outdoor conditions, for a long period. The waxy protective film does not become brittle and protects against heavy corrosive circumstances as moisture and salt water.

Aerosol 300 ml	Ref. 30400
Bulk 5L	Ref. 20324
Bulk 20L	Ref. 20327
Bulk 200L	Ref. 30402





CRC ZINC

Cathodic protection, even for damaged galvanised parts. Zinc based coating with excellent adhesion to metal surfaces.

The high zinc content is sacrificed during the corrosion process and so provides a galvanic protection of the treated metal. The dry coating contains a maximum amount of zinc (purity 98%), ensuring a self-healing effect when the coating gets scratched. The dry coating is matt and has an excellent surface structure to be painted.

Aerosol 400 ml	Ref. 20788
Bulk 750 ml	Ref. 30564



CRC ZINC PRIMER

Corrosion protective primer, easy to paint over.

A Zinc-Phosphate primer for metal surfaces. Dries quickly. Improves adhesion of the finishing coating. A corrosion protective additive slows down corrosion. Can be painted over with all kinds of single component paints, already after one hour.

Aerosol 400 ml	Ref. 10240
----------------	------------



CRC GALVA BRITE

Protective, final coating with a shiny aluminum aspect.

A single component Zinc-Aluminum coating. Protects against corrosion and forms a glossy aluminum look on the coated surface. Good adhesion to metal surfaces. Results in a unique combination of flexibility and hardness.

Aerosol 400 ml	Ref. 10250
----------------	------------



CRC GALVA SHINE

Touch-up paint for hot galvanised pieces.

Protective coating with an exceptional gloss. Gives the work piece the aspect of a freshly hot galvanised piece. The film is very resistant and keeps its brilliance in time. Ideal paint for touch-ups of freshly galvanised pieces. The paint can also be used to give pieces a new zinc look.

Aerosol 400 ml

Ref. 30714

CRC INOX 200

Anti-corrosion coating for stainless steel surfaces.

Coating with good anti-corrosion properties and a nice look, identical to stainless steel (inox). The coating is fast drying, resistant to high temperatures and has excellent adhesion properties. Ideal touch-up paint : to be used after welding or when mounting a stainless steel construction. Will cover and protect discolored welding seams.

Aerosol 400 ml

Ref. 30739



CRC ALU HITEMP

Protective coating with aluminum look. Resists high temperatures.

Paint that resists high peak temperatures up to 600°C. Provides a hard and durable surface, which does not burn, crack or scale down, even at high temperatures. Withstands large fluctuations in temperature. Excellent weather resistance.

Aerosol 400 ml

Ref. 11074

CRC URETHANE ISOLATION

Protective, urethane based varnish for electronic components.

Clear transparent or red colored one-component, urethane type coating. Urethane coating seals out water and moisture and acts as a barrier for contaminants. The coating dries fast and adheres well to most surfaces. After curing, the protective film has a high flexibility, is durable and resists abrasion and contamination.

Aerosol 300 ml - Clear

Ref. 10628

Bulk 4L - Clear

Ref. 10630

Aerosol 300 ml - red

Ref. 10639

Bulk 4L - red

Ref. 10641





ANTI-CORROSION - Durable



CRC GALVACOLOR

Aerosol paint that protects the metal from corroding.

Zinc-phosphate protective coating. Ideal for identification of utility conduits. Primer and topcoat in one. Short drying time. Official RAL identification colors. Conform to the protect category C3 (ISO 12944-2).

Available Colors

■ Aerosol 500 ml - Black (RAL 9005)	Ref. 20581
■ Aerosol 500 ml - Blue (RAL 5012)	Ref. 20572
■ Aerosol 500 ml - Brown (RAL 8001)	Ref. 20578
■ Aerosol 500 ml - Green (RAL 6010)	Ref. 20575
■ Aerosol 500 ml - Red (RAL 3000)	Ref. 20566

□ Aerosol 500 ml - Silver (RAL 9006)	Ref. 20584
■ Aerosol 500 ml - Violet (RAL 4001)	Ref. 20569
□ Aerosol 500 ml - White (RAL 9010)	Ref. 20587
■ Aerosol 500 ml - Yellow (RAL 1004)	Ref. 20563
■ Aerosol 500 ml - Orange (RAL 2011)	Ref. 32170

CRC RUST CONVERTER

Rapidly converts rust into a tough, protective surface.

Transforms the rust layer into a durable coating. Forms a tough barrier against corrosion. The final black coating forms a natural protection for the valuable steel structure. Easy and ready to use - not necessary to paint afterwards. Applicable with a normal paint brush. Immediate results; visible within 5 minutes (depending circumstances). Water based product. Contains zinc pigments. Can be over-painted with esthetic top coat e.g. CRC Galvacolor.

Bulk 750 ml	Ref. 30067
-------------	------------



CRC RUST REMOVER

Removes corrosion and/or rust from metals.

CRC Rust Remover is a concentrated scale and rust remover. Based on acid, it removes rust and cleans metal surfaces from scale, tarnish, oxidation and stains.

Bottle 250 ml	Ref. 30610
Bulk 5L	Ref. 10752
Bulk 20L	Ref. 30611



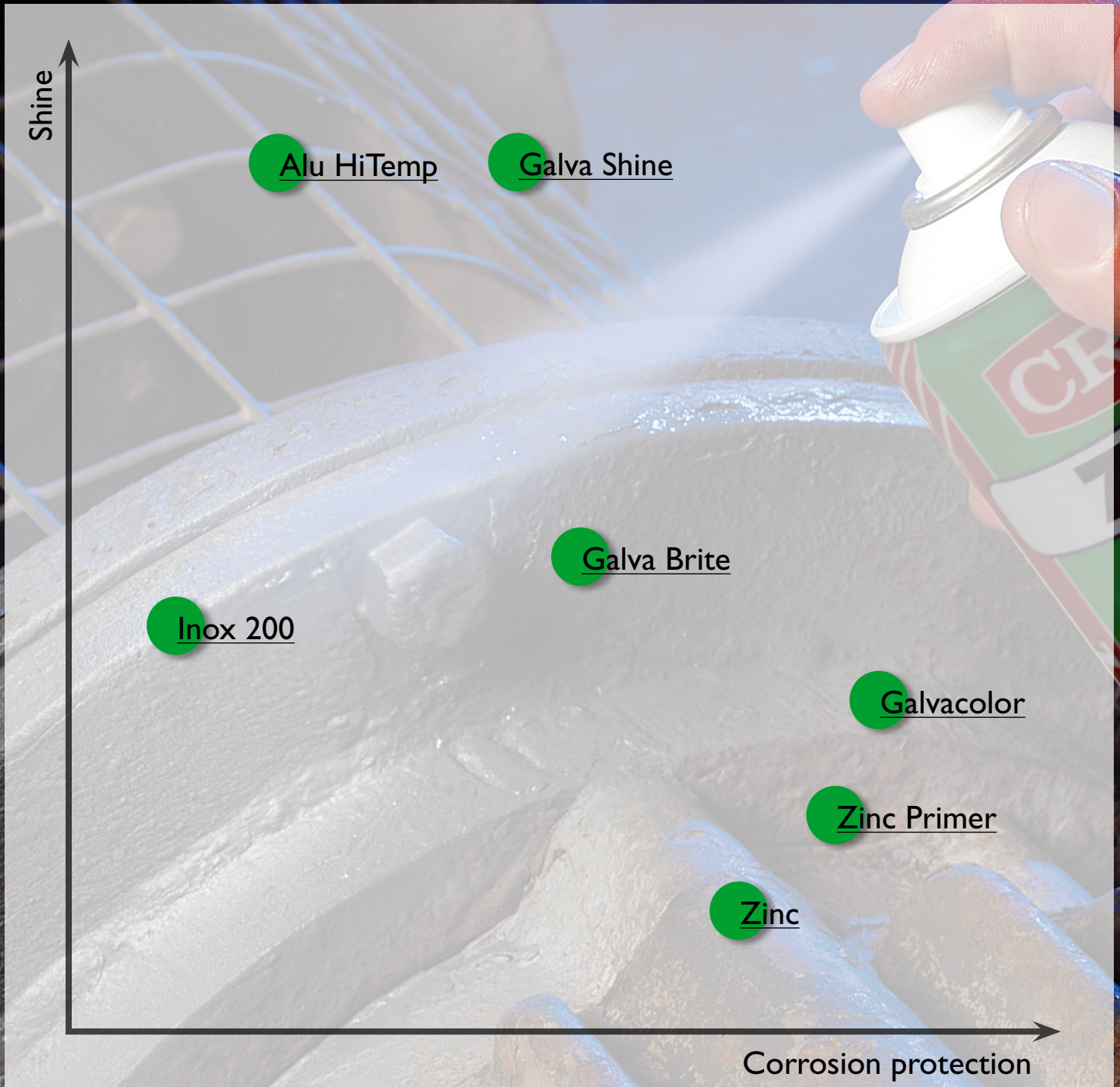
CRC FERROKLEEN PRO

Cleans painted and bare metal surfaces contaminated with rust, lime, algae, oils and tar.

Takes rust and rust stains on painted or plastic surfaces away. Effective against a wide range of scales. Non flammable. Slightly foaming. Composed of > 90% anorganic components and biodegradable organic components. Not classified as dangerous for the aquatic environment.

Bulk 5 kg	Ref. 30089
Bulk 20 kg	Ref. 30199







Marking and Signalisation



Temporary

Multi position



MARKER PAINT



AQUA PAINT MARKER



VERTICAL MARKER

Permanent

Horizontal areas



STRIPPING PAINT



AQUA STRIPPING PAINT

Precision



MARKER PEN



MARKER BALL



SOLID MARKER

Other



Ral paints



ACRYL RAL PAINT



AQUA RAL PAINT

Corrosion protection



GALVACOLOR

Accessories

Marker Paint Application Stick

Ref. I1508



Striping Paint Machine

Ref. I1507





CRC MARKER PAINT

Special multi position paint for manual marking and signaling.

A fast drying paint, formulated for temporary signaling and marking jobs for all types of outdoor works. CRC Marker Paint can be used in all positions, no need to purge after use. Due to the special resin the product has a very good adherence to any type of substrate (asphalt, rock, concrete, wood, ...), even under severe weather conditions (humidity, cold,...). The special formula ensures a good (fluorescent) aspect over light and dark areas.



Available Colors

■ Aerosol 500 ml - Black	Ref. 10164
■ Aerosol 500 ml - Fluo Blue	Ref. 10160
■ Aerosol 500 ml - Fluo Fuchsia	Ref. 10163
■ Aerosol 500 ml - Fluo Green	Ref. 10157
■ Aerosol 500 ml - Fluo Orange	Ref. 10165

■ Aerosol 500 ml - Fluo Red	Ref. 10155
■ Aerosol 500 ml - Fluo Violet	Ref. 10167
■ Aerosol 500 ml - Fluo Yellow	Ref. 10158
□ Aerosol 500 ml - White	Ref. 10162
■ Aerosol 500 ml - Yellow	Ref. 10154

CRC AQUA PAINT MARKER

Water based paint for manual marking and signaling.

A special water based paint formulated for signaling and marking jobs for all types of outdoor and indoor works. Due to the special resin the product has a very good adherence to any type of substrate (asphalt, rock, ground, concrete), even under severe weather conditions (humidity, cold,...). The special formula ensures a good (fluorescent) aspect over light and dark areas. Ecological paint.



Available Colors

■ Aerosol 500 ml - Fluo Blue	Ref. 30013
■ Aerosol 500 ml - Fluo Green	Ref. 30012
■ Aerosol 500 ml - Fluo Orange	Ref. 30011

■ Aerosol 500 ml - Fluo Red	Ref. 30009
■ Aerosol 500 ml - Fluo Yellow	Ref. 30010
□ Aerosol 500 ml - White	Ref. 30014



CRC VERTICAL MARKER

High (weather and wear) resisting marking paint.

To identify levels, topographic points, trees, pallets, boxes, props, tubes,... Its special fine spray pattern allows also writing and fine markings. The thixotropic paint does not drip off and makes even upwards marking on vertical surfaces possible. Ecological paint.



Available Colors

■ Aerosol 500 ml - Black	Ref. 11714
■ Aerosol 500 ml - Fluo Blue	Ref. 11711
■ Aerosol 500 ml - Fluo Fuchsia	Ref. 11713
■ Aerosol 500 ml - Fluo Green	Ref. 11707

■ Aerosol 500 ml - Fluo Orange	Ref. 11716
■ Aerosol 500 ml - Fluo Red	Ref. 11705
■ Aerosol 500 ml - Fluo Yellow	Ref. 11709
□ Aerosol 500 ml - White	Ref. 11712





CRC STRIPING PAINT

Special paint for line marking.

CRC Stripping Paint is especially developed to trace lines either indoors or outdoors. The chosen resins offer a high resistance to wear and extreme bad weather conditions. Equal and precise line tracing and long lasting coverage over flat surfaces.

Available Colors

■ Aerosol 500 ml - Black	Ref. 11673	■ Aerosol 500 ml - Red	Ref. 11675
■ Aerosol 500 ml - Blue	Ref. 11676	□ Aerosol 500 ml - White	Ref. 11668
■ Aerosol 500 ml - Green	Ref. 11677	■ Aerosol 500 ml - Yellow	Ref. 11671

CRC AQUA STRIPING PAINT

Waterbased line marker.

Environmentally friendly, water based, permanent line marking paint. High resistance against abrasion. Precise application.

Available Colors

■ Aerosol 500 ml - Black	Ref. 31900	■ Aerosol 500 ml - Red	Ref. 31902
■ Aerosol 500 ml - Blue	Ref. 31903	□ Aerosol 500 ml - White	Ref. 31899
■ Aerosol 500 ml - Green	Ref. 31904	■ Aerosol 500 ml - Yellow	Ref. 31901



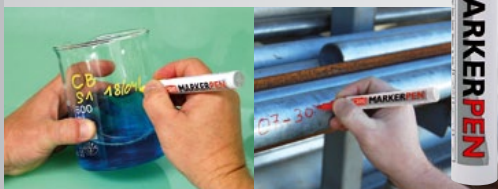
CRC MARKER PEN

Marker Pens for multi surface use.

Excellent coverage thanks to the use of correction fluid technology. Can be used on wood, metal, rubber, glass, textile, paper, enamel, plastic, cardboard, tiles, ... Easy and clean application.

Available Colors

■ Pen - Black	Ref. 20365
■ Pen - Blue	Ref. 20369
■ Pen - Brown	Ref. 30210
■ Pen - Gold	Ref. 20375
■ Pen - Green	Ref. 20380
■ Pen - Orange	Ref. 20384
■ Pen - Red	Ref. 20388
■ Pen - Silver	Ref. 20392
■ Pen - Violet	Ref. 30211
□ Pen - White	Ref. 20395
■ Pen - Yellow	Ref. 20400



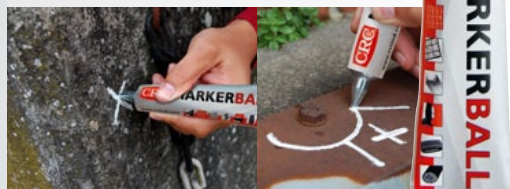
CRC MARKER BALL

Indelible paint. Industrial use only.

Tip with steel ball. For all types of surfaces. Functions on wet, oily, greasy and rusted surfaces. UV resistant. Excellent water resistance. Functional over a wide temperature range.

Available Colors

■ Tube - Black	Ref. 30159
■ Tube - Blue	Ref. 30163
■ Tube - Green	Ref. 30162
■ Tube - Red	Ref. 30161
□ Tube - White	Ref. 30158
■ Tube - Yellow	Ref. 30160



CRC SOLID MARKER

Solid Marker, enabling a permanent marking on all surfaces in all conditions. Ideal to use on rough surfaces. Functions on wet, oily, greasy and rusted surfaces. UV resistant. Excellent water resistance. Functional over a wide temperature range.

Available Colors

□ Stick - White	Ref. 30156
■ Stick - Yellow	Ref. 30157





CRC ACRYL RAL

An acrylic based paint.

Fast drying. Excellent flexibility. Once the paint is polymerized, it has a high UV resistance. Good adhesion on metal, wood, glass, paint-able plastics, concrete, stone. Does not contain any heavy metals. Good covering ability. Long lasting, intensive shine. Available in a wide variety of RAL colors.

Aerosol 400 ml

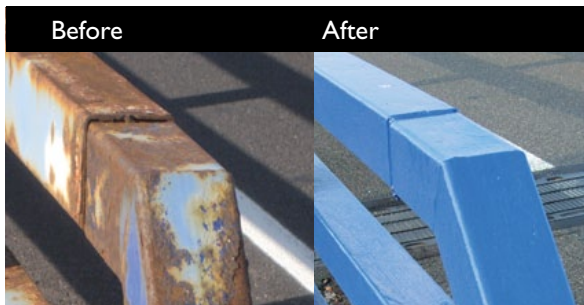
CRC AQUA RAL

Environmentally friendly, acrylic based paint with an optimized use of water as solvent.

Fast drying paint with good flexibility. High UV resistance once the paint is polymerized. Good adhesion on stone, concrete, wood, glass, paint-able plastics and metal. Good covering ability. Does not contain any heavy metals. Long lasting, intensive shine. Available in several RAL colors.



Aerosol 400 ml



CRC GALVACOLOR

Aerosol paint that protects the metal from corroding.

Zinc-phosphate protective coating. Ideal for identification of utility conduits. Primer and topcoat in one. Short drying time. Official RAL identification colors. Conform to the protect category C3 (ISO 12944-2).



Available Colors

■ Aerosol 500 ml - Black (RAL 9005)	Ref. 20581	□ Aerosol 500 ml - Silver (RAL 9006)	Ref. 20584
■ Aerosol 500 ml - Blue (RAL 5012)	Ref. 20572	■ Aerosol 500 ml - Violet (RAL 4001)	Ref. 20569
■ Aerosol 500 ml - Brown (RAL 8001)	Ref. 20578	□ Aerosol 500 ml - White (RAL 9010)	Ref. 20587
■ Aerosol 500 ml - Green (RAL 6010)	Ref. 20575	■ Aerosol 500 ml - Yellow (RAL 1004)	Ref. 20563
■ Aerosol 500 ml - Red (RAL 3000)	Ref. 20566	■ Aerosol 500 ml - Orange (RAL 2011)	Ref. 32170





WELDING PRODUCTS

Spatter release

Solvent based Non-flammable



ANTI SPATTER

Solvent Based



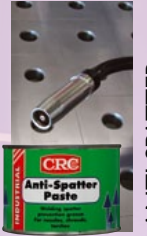
EASYWELD

Water based



ECO BIO WELD

Paste



ANTI SPATTER PASTE

Cleaners

Pickling paste



INOXWELD KLEAN

Non-destructive testing (NDT)

Solvent cleaner



CRICK 110

Penetrating colorant

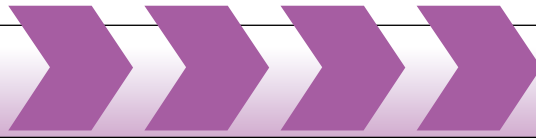


CRICK 120

Developer



CRICK 130



CRC ANTI-SPATTER PRODUCTS ensure an easy removal of spatter on metal surfaces and protect the area around the welding seam from spatter. CRC anti-spatter products also prevent the obstruction of the nozzle of automatic and semi-automatic welding equipment, thus ensuring a free gas flow and a free supply of welding material.

CRC Anti Spatter

Non-flammable, solvent based anti spatter, for use on site.

Aerosol 400 ml	Ref. 11052
Bulk 5L	Ref. 11055
Bulk 20L	Ref. 30733

CRC Easy Weld

Economic anti spatter, for use in the workshop.

Aerosol 400 ml	Ref. 30737
----------------	------------

CRC ECO Bio Weld

Non-flammable water based anti spatter, ideal when galvanising will be performed afterwards. Readily biodegradable according to OECD 301B: 68% (Bulk, 74%).

Aerosol 500 ml	Ref. 31913
Bulk 5L	Ref. 10742
Bulk 20L	Ref. 30606

CRC Anti Spatter Paste

Pasty anti spatter for protection of the welding torch. Prevents the build-up of welding material on the torch.

Tin 500 ml	Ref. 10747
------------	------------

CRC INOX WELD KLEEN

Restores the original characteristics of Stainless Steel after welding.

CRC Inox Weld Kleen is a pickling paste that restores the original characteristics of stainless steel after welding or heat treatment. Degreasing, cleaning, pickling and passivating of austenitic and duplex stainless steel 303, 304, 316,...., nickel and aluminum. Fast-working, very efficient, economical and practical to use.

Bulk 2 Kg	Ref. 30379
-----------	------------





The CRC CRICK SYSTEM detects in a quick and reliable way, small cracks or failures in welding seams, without expensive equipment or destructive testing. (NDT - Non-destructive testing)

CRC CRICK 110

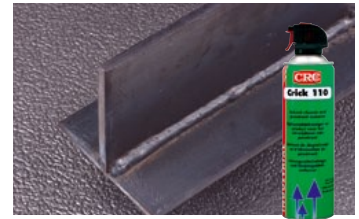
Solvent cleaner to prepare the surface for examination.

A fast drying cleaner for the removal of all kinds of contaminants on the surface to be inspected. Serves as a preparation of the surface before inspection with liquid penetrant.



Aerosol 500 ml

Ref. 30723



CRC CRICK 120

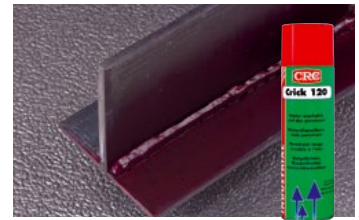
Penetrating colorant to mark the cracks and failures.

Red colored, water washable penetrant for non-destructive testing of metal surfaces. The penetrant can flow into tiny cracks within a time frame of 10 to 20 minutes. The excess of penetrant has to be washed away before using the developer.



Aerosol 500 ml

Ref. 30205



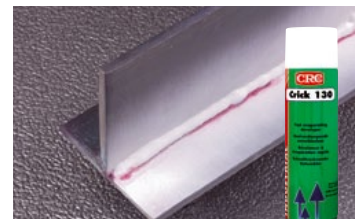
CRC CRICK 130

Developer to make the marked cracks and failures visible.

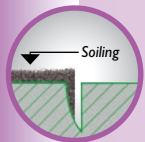
Magnifies and makes each trace of Crick 120 visible after the developer has been applied, for at least 7 minutes. Post cleaning of the inspected area can be done with Crick 110.

Aerosol 500 ml

Ref. 20790

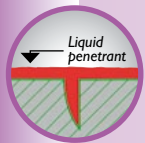


Instructions for use



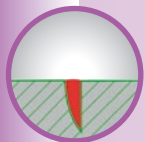
1. Cleaning of the surface

The surface to be checked must be clean, degreased and dry. All soiling like rust, oil, grease, paint,... which can mask the imperfections must be removed. Finish the cleaning by spraying **CRC Crick 110** generously. If possible wipe with an absorbent cloth and allow to dry thoroughly.



2. Penetrant

Shake the can of **CRC Crick 120** prior to use. Spray the penetrant in a light, even film on the surface, wetting all areas to be controlled. Allow to drain for 10 to 20 minutes.



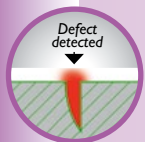
3. Excess penetrant removal

Remove excess of penetrant by wiping the surface using a lint-free cloth. Apply CRC Crick 110 or water (CRC Crick 120 is water washable) until all visible, colored traces are removed. Care must be taken that only disturbing penetrant on the surface is removed. Dry properly.



4. Development

Shake the can of **CRC Crick 130** thoroughly prior to use. Spray a light, homogeneous coating of developer from a distance of about 20 cm. Avoid any excess of developer to avoid masking the finest flaws. Allow to develop for at least 7 minutes so that imperfections are visible.



5. Visual inspection of defects • Detects cracks of 20 µm!

As time passes, the defects appear as red spots or lines on a white background. The speed of appearance, the shape and dimensions can give information on the nature of the defects. If necessary, post-clean the controlled surface and protect against corrosion with one of CRC's corrosion protection products.



ADHESIVES

Locking



Temporary



SOFT LOCK

Permanent



EXTRA LOCK

Sealing



Thread



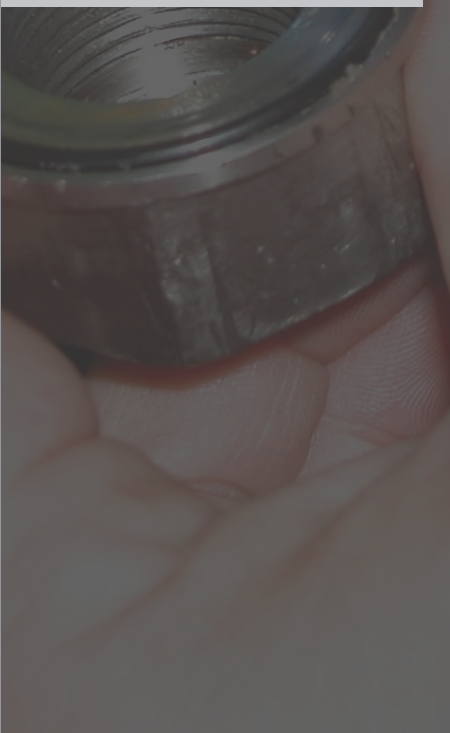
EASY SEAL

Flange



RIGID SEAL

Bonding



Cyanoacrylate

Fast Cure



QUICK FIX

Contact adhesives

Fast Dry

High Strength



FAST STICK

POWER STICK





CRC SOFT LOCK

Dismountable locker for threaded metal connections.

A blue colored medium strength anaerobic adhesive. CRC Soft Lock is used to lock those threaded connections that will have to be dismantled in the future, by use of normal tools and without damaging the parts or fittings. Recommended for use on threaded connections from M5 till M16.

Bottle 50 ml

Ref. 30696

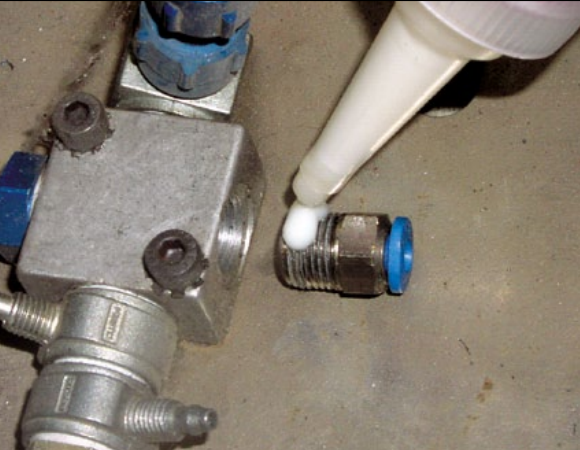
CRC EXTRA LOCK

Permanent locker for threaded metal connections and fixation of bearings.

A green colored high strength anaerobic adhesive. CRC Extra Lock is used to lock those threaded connections that need a certain fixation and may not loosen during operation. CRC Extra Lock is also suitable for locking bearings and axes. Recommended for use on threaded connections from M5 till M16, as well as on bearings and bushings.

Bottle 50 ml

Ref. 30697



CRC EASY SEAL

Liquid seal for threaded metal couplings.

A white colored low strength anaerobic adhesive, used to seal threaded connections in hydraulic or pneumatic installations, as well as threaded connections in the plumbing business. The position of components can be adjusted during an extended period, even under low pressure. Recommended for use till 3" BSP connections.

Squeeze Bottle 50 ml

Ref. 30698

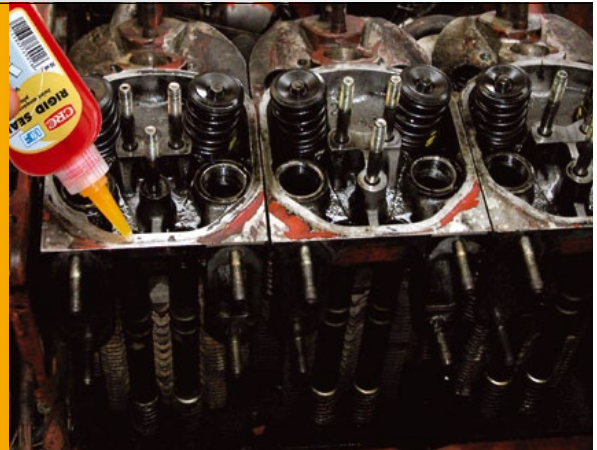
CRC RIGID SEAL

Liquid seal for machined metal flanges.

An orange colored high strength anaerobic adhesive. CRC Rigid Seal is used to seal stiff, machined metal flanges that are used in industrial piping, engine covers, gearbox covers and hydraulic or pneumatic installations. Excess of material can be wiped off with a dry cloth or is dissolved in oil.

Squeeze Bottle 50 ml

Ref. 30699





CRC QUICK FIX

Cyanoacrylate adhesive for general, non-structural bonding on metals and plastics.

Designed for general use. CRC Quick Fix has a relatively slow curing time, enabling correct positioning for precise work during some seconds.

Tube in Blister 3 g	Ref. 30710
Bottle 20 g	Ref. 30709

CRC FAST STICK

Fast tacking, non-chlorinated spray adhesive.

This specialist formulation will provide instant 'grab', allowing stress to be exerted on the bond before full cure strength is achieved.



Aerosol 500 ml	Ref. 30383
----------------	------------



CRC POWER STICK

High strength adhesive.

Does not contain Methylene Chloride or other chlorinated solvents. CRC Power Stick has a long open bond time, allowing large areas to be covered before the film dries.

Aerosol 500 ml	Ref. 30454
----------------	------------





CRC 2-26

Repels any humidity left after water damage, protects against friction and corrosion.

CRC 2-26 is a multipurpose lubricant, preventing electric and electronic malfunction due to water penetration, humidity, condensation or corrosion. Displaces water, cleans, removes current leaks, lubricates and protects.

Aerosol 200 ml	Ref. 30345
Aerosol 400 ml	Ref. 10084
Bulk 5L	Ref. 10089
Bulk 20L	Ref. 10093
Bulk 200L	Ref. 30350



CRC BELT GRIP

Friction intensifier for non-toothed belts.

Prevents slip on all kinds of belts, except toothed belts. Based on a synthetic polymer, CRC Belt Grip increases the transmission of power between belts and pulley. It gives an improved traction and allows running in at reduced belt tension.



Aerosol 400 ml	Ref. 20787
----------------	------------



CRC PEEL OFF

Protective Varnish.

Red color. Easy to remove, CRC Peel Off will form a protective flexible coating. The homogeneous and non-porous thin film will protect pieces against humidity, corrosion and other weather influences. Ideal for intermediate protection during transport or periods of inactivity. It can also be used to protect paint cabinets. The film can easily and rapidly be removed just by peeling off (without the use of solvents).



Aerosol 500 ml	Ref. 20240
Bulk 5L	Ref. 20491



CRC ECO LEAK FINDER

Allows detecting leaks in gas conducts and installations.

Water based detector for gasses. Meets the requirements of EN 14291 and DVGW (Deutsche Vereinigung des Gas- und Wasserfaches) registration number NG-5170AS0069. CRC Leak Finder detects gas leaks in pressurized pipe work and pressurized systems. At the location of a gas leak, it forms highly visible bubbles. Biodegradable according to OECD 301B: 31%.

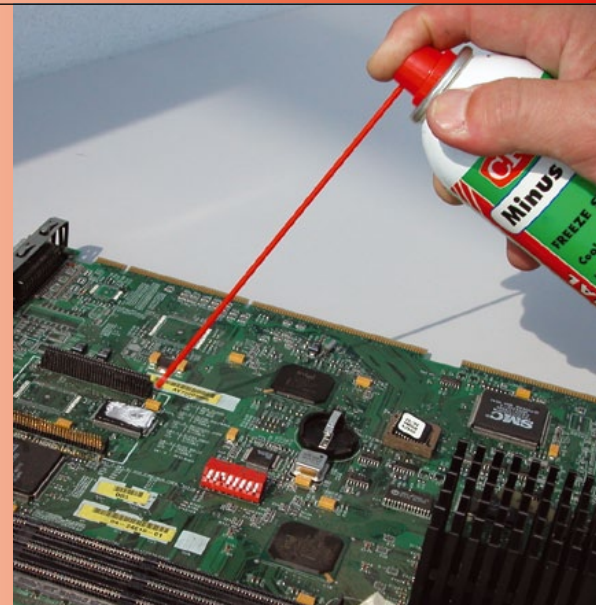
Aerosol 500 ml	Ref. 10732
Bulk 5L	Ref. 30058



CRC MINUS 50

Inert, non-flammable coolant.

Strong non-flammable inert dry coolant, down to -50°C , for electrical and electronic maintenance. CRC Minus 50 can be used for maintenance, fault detecting and repairs in the electric and electronic field.



Aerosol 200 ml	Ref. 30720
----------------	------------

CRC ROM 300

Aqueous based protection for pantographs.

An aqueous based semi-permanent protective film to prevent the formation of ice and the accumulation of snow on pantographs. Directions: Apply to the surface to be treated. Allow to dry completely prior to operation



Bulk 5L	Ref. 30056
---------	------------





CRC HAND SPRAYER

Simple refillable spraybottle. The spray pressure is generated by a trigger movement. The hand sprayer can be used for all CRC bulk products except the cleaners.

Handsprayer 500 ml	Ref. 32168
--------------------	------------

CRC PUMP SPRAYER

Refillable spraybottle. The pressure for spraying is generated by a manual pump system. The pressure available in the bottle allows a constant spray pattern for a longer time. The pump sprayer can be used for most CRC bulk products.

Pumpsprayer 1L	Ref. 30463
----------------	------------



CRC REFILLABLE CAN

The refillable can combines the benefit of using bulk products with the features of an aerosol. The can is brought to a pressure of 8 bars by filling it with compressed air through a standard compressor and filter/regulator unit.

Refill Can	Ref. 30663
Refill Can Gas Station	Ref. 32239
Spare Parts Kit	Ref. 30667

CRC HANDCLEANER ACCESSORIES

Rack for easy suspension of the cleaner reservoir. The cover of the reservoir can be exchanged by the handpump. The handpump allows an easy dispensing without spillage and without contaminating the reservoir with dirty hands.

Rack for 2,5L Handcleaners	Ref. 10871
Dispenser for 2,5L Handcleaners	Ref. 10902



CRC GREASE GUN

An easy loading grease gun for a standard 400g grease cartridge.

Grease Gun	Ref. 30669
------------	------------

DISPLAYS



AEROSOL

A self-contained sprayable product comprising of a mixture of active ingredients, carriers and propellant contained in a steel or aluminium container which discharges the formulation under pressure. Aerosols are hermetically sealed, ensuring risk of spillage is removed, storage simplified, and combustion risks minimised - all benefiting Health & Safety guidelines. Assists with precise and controlled application.

BARRIER PROTECTION

Barrier protection is one of two primary methods of protecting metals from corrosion. By coating the metal with a suitable product (e.g. Acrylic Paints; Bright, Cold Galvanise; Innox 200, etc), corrosion is unable to take place because electrolytes (such as rain water) are unable to come into contact with the metal and an electron flow cannot be established, thus preventing galvanic corrosion.

BIODEGRADATION / BIODEGRADABLE

The process by which organic substances are broken down into harmless constituents by the natural action of living micro-organisms.

CATHODIC PROTECTION

Cathodic protection is based on the ionic charge of the metal and the reversal or mitigation of the flow of electrons as found in galvanic corrosion. The protective coating applied should have a lower potential (volts) than the metal it is to protect so that the coating is corroded in preference to the base metal - with protection often extending beyond the physical edge of the coating. By offering itself for corrosion instead of the base metal, this type of coating is often termed 'sacrificial' and is, in essence, how galvanised steel is protected.

DIELECTRIC STRENGTH

The maximum electrical field strength that an insulating material can withstand intrinsically without decomposing, usually specified in volts per millimetre of thickness. Also known as the breakdown voltage.

EDTA

EDTA is the chemical compound ethylenediaminetetraacetic acid, also known as diaminoethanetetraacetic acid disodium salt. It is most commonly used as a constituent in water based cleaning chemicals to bind with a water soluble compound. This use has now become less prominent due to concerns over the biodegradability and EDTA has also found some specialist uses as a preservative in some processed foods and cosmetics.

EMULSION

A combination of water-soluble and water-insoluble chemical groups held together by a surfactant. Emulsions are usually milky white.

EPP

See page 5.

EVAPORATION RATE

The rate at which a material will vaporise (evaporate) when compared to the known rate of vaporisation of a standard material. The designated standard material is usually n-butyl acetate, with a vaporisation rate designated as 1.0. The higher the number, the faster the evaporation rate.

FDA

The FDA (Food and Drugs Administration) ensures that all ingredients used in foods are safe, and that food is free of contaminants such as disease-causing organisms, chemicals, or other harmful substances. The FDA reviews the results of laboratory, animal and human clinical testing conducted by companies to determine if the product they wish to place on the market is safe and effective. The FDA does not develop or test products itself, nor issue approvals.

FILM STRENGTH

The measurement of a lubricant's ability to keep an unbroken film during operation (load) conditions.

FLASH POINT

The lowest temperature at which the vapors of a solvent will flash (ignite) under specific test conditions.

GALLING

The process by which metal components 'cold weld' and seize. When two metals are brought together under pressure, the action of forcing the surfaces together can cause the contacting faces to begin to combine at an atomic level, fusing the pieces together. Where stainless steel or aluminum alloys are used, the friction can scour off the thin, non-reactive protective oxide layer, exposing clean reactive material - allowing atomic fusing to occur. Galling can be prevented by the use of a lubricant, such as bearing grease, however, grease needs to be 'worked' before full lubrication is

achieved, therefore a running-in paste should be used to prevent galling in this start-up period.

GALVANIC CORROSION

Is an electrochemical process which occurs when two metals with differing electrical potentials are in contact with each other in the presence of an electrolytic solution (such as rain water).

GALVANISING

Galvanising is the process by which clean, degreased ferrous metal (i.e. steel) has a layer of zinc applied to its surface using extreme heat to form an inseparable alloy at the point where the two layers are fused. Zinc will be corroded in preference to the ferrous substrate thereby preventing structural corrosion. This type of coating is referred to as a 'sacrificial coating'.

ISO 9001

Internationally recognised Quality Management system standard, indicating our commitment to quality and continuous improvement. The standard has been developed to provide a framework around which a quality management system can effectively be implemented.

KB VALUE

The Kauri Butanol (KB) value is a measure of the relative solvent power of a hydrocarbon liquid. The higher the KB value, the more powerful the solvent.

MODULUS

Where two substrates/surfaces are bonded together with either an adhesive or sealant, they are often subject to forces which could, with enough pressure, result in the bond failing. Modulus is measured in Pascal's. Low modulus means the bond is more flexible and has more 'give' in it, i.e. good for expansion joints. High modulus means that the bond is stiffer and less flexible.

MRO

Abbreviation for the term "Maintenance, Repair, and Overhaul". Typically associated with the service and repair sectors, including plant and site maintenance / engineering.

NLGI GRADE

A widely used classification for lubricating greases established by the National Lubricating Grease Institute and a reference to the measure of the consistency of a particular grease. The most common consistency number is #2. Softer grades, especially #0 and #1, are often used for improved low-temperature service. High consistency numbers, #3 through #6 are used for certain high-speed bearings where leakage and sealing are particular concerns. The higher the number, the more viscous the grease.

NSF EXPLAINED

See page 4.

OZONE DEPLETERS

Halogen-containing substances known to reduce the protective effects of the stratospheric ozone layer. Aerosols manufactured within Europe have been free of ozone depleting substances for many years.

pH

A scale ranging from 0 to 14 used to measure acidity and alkalinity. The lower the number the more acidic; the higher the number, the more alkaline; 7 is neutral.

POTABLE WATER

Water of sufficient quality to serve as drinking water is called potable water whether it is used as such or not. Although most fresh water sources are drinkable by humans, they can be a disease vector or cause long-term health problems if they do not meet certain water quality guidelines.

POUR POINT (PP)

The lowest temperature at which a fluid still can be pumped.

PTFE

PTFE is the abbreviation for polytetrafluoroethylene. PTFE appears in the Guinness Book of Records as having the lowest coefficient of static and dynamic friction of any solid. This value, at 0.02, is equivalent to wet ice on wet ice, indicating its extreme anti-friction properties.

REACH

Registration, Evaluation and Authorisation of Chemicals. REACH is an EU-wide reform of the regulatory environment in which chemicals are used and will eventually replace and update many other pieces of chemical control legislation. The aim is to reduce the risks to human health and the environment through the methodical and accurate identification of the properties of chemical substances. Whilst there is no definitive list of 'approved' chemicals as yet, a

series of deadlines will ensure that the highest volume and most harmful are evaluated first. REACH relies on end-user application information to be filtered up through the supply chain to establish accurate registration and evaluation. More information can be found at: www.hse.gov.uk/reach.

RAL

In 1925, the private sector and the German government founded the "Reichsausschuss für Lieferbedingungen" - RAL - (Committee of the German Reich for Terms and Conditions of Sale). RAL's original task was to standardise precise technical terms of delivery and sale. The RAL color collection comprises over 200 colors with a four-digit numbering. The registers also include safety and signal colors and they comply with the requirements of the DIN standards (German Industrial Standards). The basic collection for matt color shades is the register RAL 840 HR while it is the RAL 841 GL register for gloss colors. RAL 840 HR is the European-wide 'registered' standard colors for the coatings industry.

RTV - ROOM TEMPERATURE VULCANISATION

Vulcanisation refers to a specific curing process of rubber involving high heat and the addition of sulphur. It is a chemical process in which polymer molecules are linked to other polymer molecules resulting in springy rubber molecules which become cross-linked. This makes the material harder, much more durable and also more resistant to chemical attack. Vulcanisation which occurs without the need for heat and sulphur, usually by the addition of activating chemicals, is known as Room Temperature Vulcanisation as the rubber 'cures' at around 25°C.

SHELL 4-BALL WELD

An industry standard test which provides an indication of the load bearing capability of a lubricant. A steel ball is loaded and rotated against 3 fixed steel balls for 10 seconds. At the end of each 10 second run, a further weight is loaded onto the balls, and the test re-run using fresh lubricant. The test is complete when the balls weld together. The weld point is the load at which this occurs. The higher the weld point, the greater the lubricity (lubricating ability) of the grease.

SURFACTANT

A descriptive term derived from 'Surface Active Agent', a specialised compound that is typically used to connect water soluble and water-insoluble chemical groups. Can be used to improve the emulsifying, foaming, dispersing and wetting properties of a product

THIXOTROPIC

A term used to describe fluids which are shear thinning. In essence, most thixotropic substances are gel-like, meaning that they retain their shape upon application, but when heated or subjected to shear stress, their shape will change and they will become thinner. The word comes from the Greek 'thixis' for touch and -tropy, from 'tropos' meaning changeable.

USDA

See page 4.

VISCOSITY

A term used to describe the resistance to flow or degree of 'thickness' of a liquid, usually expressed in units of poise or stokes. The more viscous a product, the thicker its consistency.

VISCOSITY INDEX (VI)

Relationship of viscosity in function of temperature.

The information given in this publication is based on our experience and reports from customers. There are many factors outside our control and knowledge which affect the use and performance of our products and for which reason no warranty is given, express or implied. Users should make their own tests to determine the applicability of such information or the suitability of any products for their own particular purposes. Statements concerning the use of the products described herein are not to be construed as recommending the infringement of any patent and no liability for infringement arising out of any such use is to be assumed.



2-26.....	54	LUB OIL PAO 320.....	35
3-36 - FPS.....	24, 39	LUB OIL PAO 46.....	36
5-56 + PTFE.....	24	LUB OIL PAO 68.....	36
ACRYL RAL.....	47	MARKER BALL.....	46
ALU HITEMP.....	41	MARKER PAINT.....	45
ANTI SPATTER.....	49	MARKER PEN.....	46
ANTI SPATTER PASTE.....	49	METAL FREE PASTE.....	31
AQUA MARKER PAINT.....	45	MINUS 50.....	55
AQUA RAL.....	47	MULTI GREASE.....	28
AQUA STRIPING PAINT.....	46	MULTI OIL - FPS.....	26
ASSEMBLY PASTE - FPS.....	31	MULTI SURFACE CLEANER.....	18
BELT DRESSING - FPS.....	27	MULTIPURPOSE CLEANER & DEGREASER.....	18
BELT GRIP.....	54	MULTIPURPOSE GEL CLEANER - FPS.....	17
CHAIN LUBE - FPS.....	26	N.F.PRECISION CLEANER.....	11
CITRUS CLEANER & DEGREASER.....	17	ODOR NEUTRALISER.....	16
CONTACT CLEANER.....	10	PEEL OFF.....	54
CONTACT KLEEN - FPS.....	11	PEN OIL - FPS.....	25
COPPER PASTE.....	31	PENETRATING OIL + MOS2.....	25
CRICK 110.....	50	PIPE DE-BLOCKER.....	16
CRICK 120.....	50	POWER LUBE.....	24
CRICK 130.....	50	POWER STICK.....	53
DRY LUBE.....	27	PUMP SPRAYER.....	56
DRY LUBE-F - FPS.....	27	PURIFYING CLEANER.....	16
DRY MOLY LUBE.....	27	QD-CONTACT CLEANER.....	11
DUST FREE.....	10	QUICK FIX.....	53
DUST FREE - FPS.....	10	REFILLABLE CAN.....	56
EASY SEAL.....	52	RIGID SEAL.....	52
EASY WELD.....	49	ROM 300.....	55
ECO BIO WELD.....	49	ROST FLASH.....	24
ECO COLD CLEANER.....	14	RUST CONVERTER.....	42
ECO COMPLEX BLUE - FPS.....	15	RUST REMOVER.....	42
ECO FOAM CLEANER - FPS.....	15	SCALE REMOVER.....	16
ECO LEAK FINDER - FPS.....	55	SILICONE.....	25
ECO MULTI GREASE.....	28	SILICONE - FPS.....	25
ECO PEN OIL.....	25	SOFT LOCK.....	52
ECO SUPERCUT.....	22	SOLID MARKER.....	46
EP FOOD GREASE - FPS.....	30	SP 350 II.....	39
EXTRA LOCK.....	52	SP 400 II.....	39
EXTREME LUBE.....	30	STRIPING PAINT.....	46
FAST DRY DEGREASER.....	12	SUPER ADHESIVE GREASE.....	29
FAST STICK.....	53	SUPER HANDCLEANER.....	19
FERROKLEEN PRO.....	42	SUPER LT GREASE + MOS2.....	28
FOOD GREASE - FPS.....	28	SUPER TAPPING COMPOUND.....	23
FOODKLEEN - FPS.....	14	SUPER TAPPING FLUID II.....	23
GALVA BRITE.....	40	SUPERCUT II.....	22
GALVA SHINE.....	41	TRAFFIC FILM REMOVER.....	17
GALVACOLOR.....	42, 47	URETHANE ISOLATION.....	41
GEAR & WIRE ROPE LUBE.....	26	VERTICAL MARKER.....	45
GRAFFITI REMOVER.....	17	WHITE LITHIUM GREASE + PTFE.....	30
GRAFFITI REMOVER.....	13	WIPES.....	19
GRAPHITE ASSEMBLY PASTE + MOS2.....	31	ZINC.....	40
GREASE GUN.....	56	ZINC PRIMER.....	40
HAND SPRAYER.....	56		
HAND WIPES.....	19		
HANDCLEANER.....	19		
HANDCLEANER ACCESSORIES.....	56		
HEAVY DUTY DEGREASER.....	18		
HIGH TEMPERATURE GREASE.....	29		
HITEMP FOOD GREASE - FPS.....	29		
INDUSTRIAL DEGREASER - FPS.....	12		
INOX 200.....	41		
INOX KLEEN - FPS.....	15		
INOX WELD KLEEN.....	14, 49		
INSULATOR CLEANER.....	15		
LABEL OFF.....	13		
LABEL OFF SUPER - FPS.....	13		
LECTRA CLEAN II.....	12		
LUB 21.....	23		
LUB OIL 32.....	37		
LUB OIL 46.....	37		
LUB OIL PAO 150.....	35		
LUB OIL PAO 220.....	35		
LUB OIL PAO 32.....	36		

www.crcind.com

Your distributor:



CRC Industries Europe

Touwslagerstraat 1
B-9240 Zele, Belgium
Tel.: +32 (0)52-456011
Fax: +32 (0)52-450034
www.crcind.com



91 100759a - EN

THOUSAND-AND-ONE SOLUTIONS